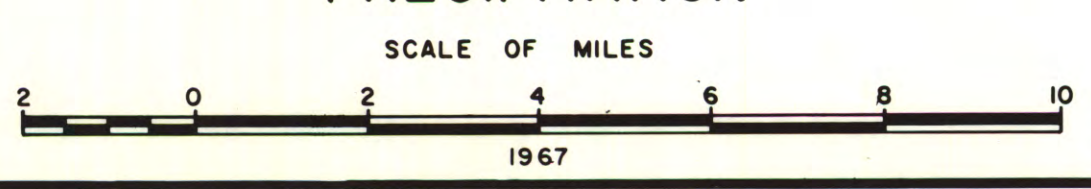
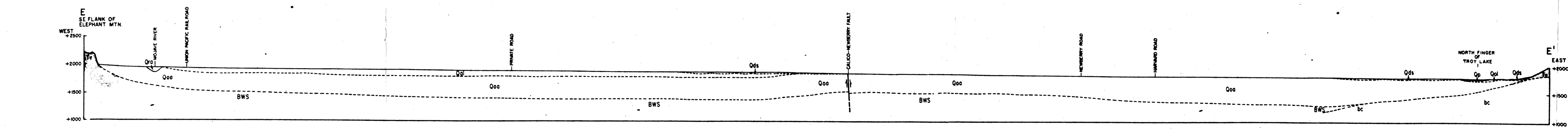
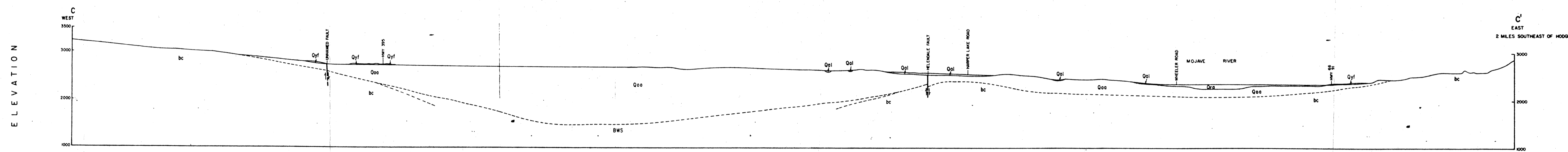
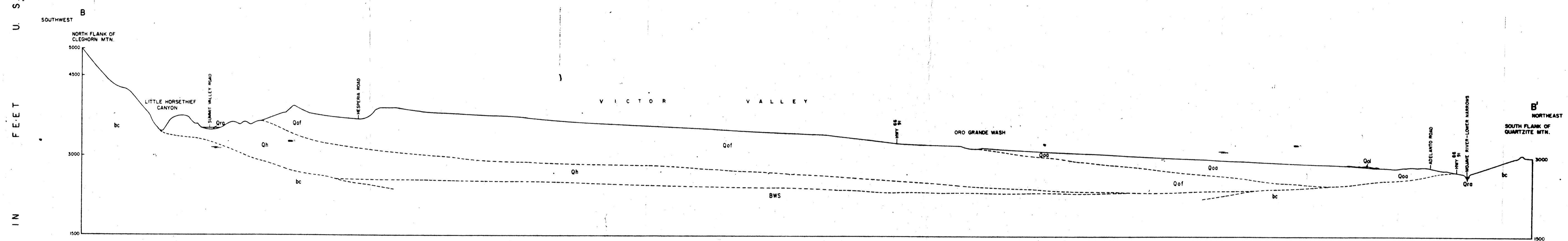
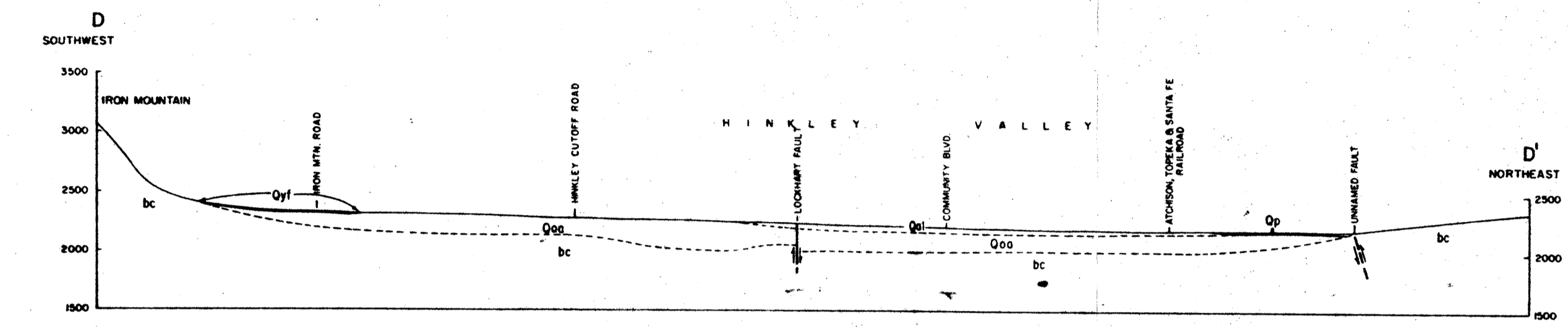
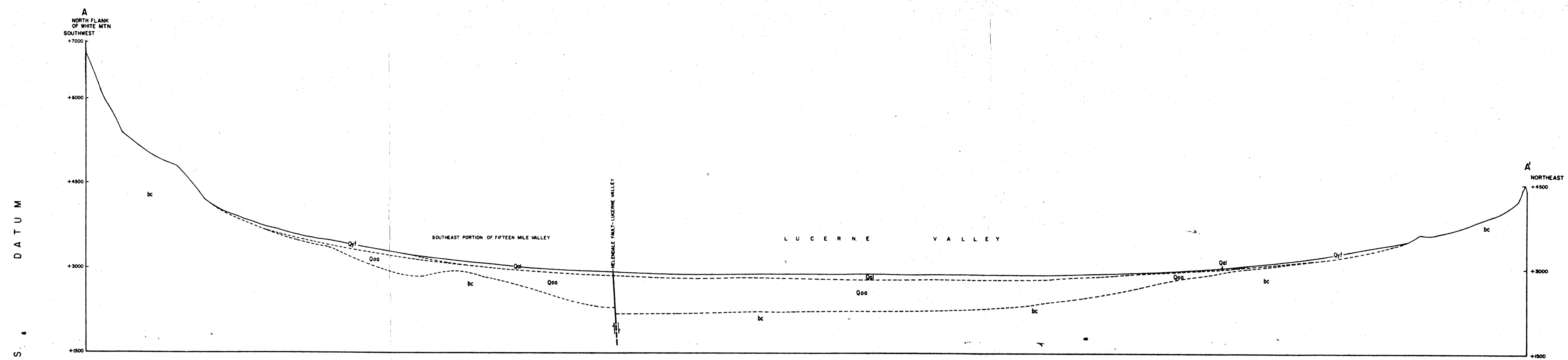


- LEGEND**
- BOUNDARY OF AREA OF INVESTIGATION
 - BOUNDARY OF MOUNTAIN AREA
 - PRECIPITATION STATION, ACTIVE
 - PRECIPITATION STATION, INACTIVE
 - ▲ STREAM GAGING STATION, ACTIVE
 - △ STREAM GAGING STATION, INACTIVE
 - 10— LINES OF EQUAL AVERAGE SEASONAL PRECIPITATION 1930-31 THROUGH 1959-60

STATE OF CALIFORNIA
 THE RESOURCES AGENCY
 DEPARTMENT OF WATER RESOURCES
 SOUTHERN DISTRICT
 MOJAVE RIVER GROUND WATER
 BASINS INVESTIGATION

PHYSIOGRAPHIC FEATURES AND
 LINES OF EQUAL AVERAGE ANNUAL
 PRECIPITATION

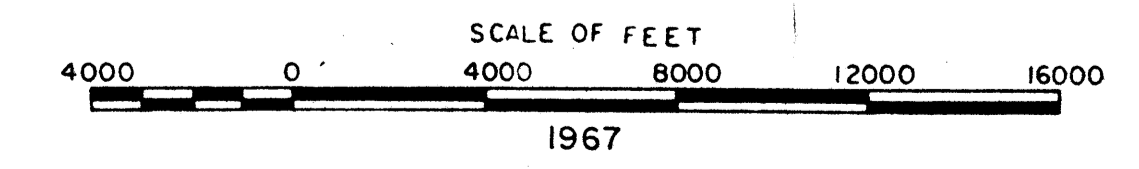


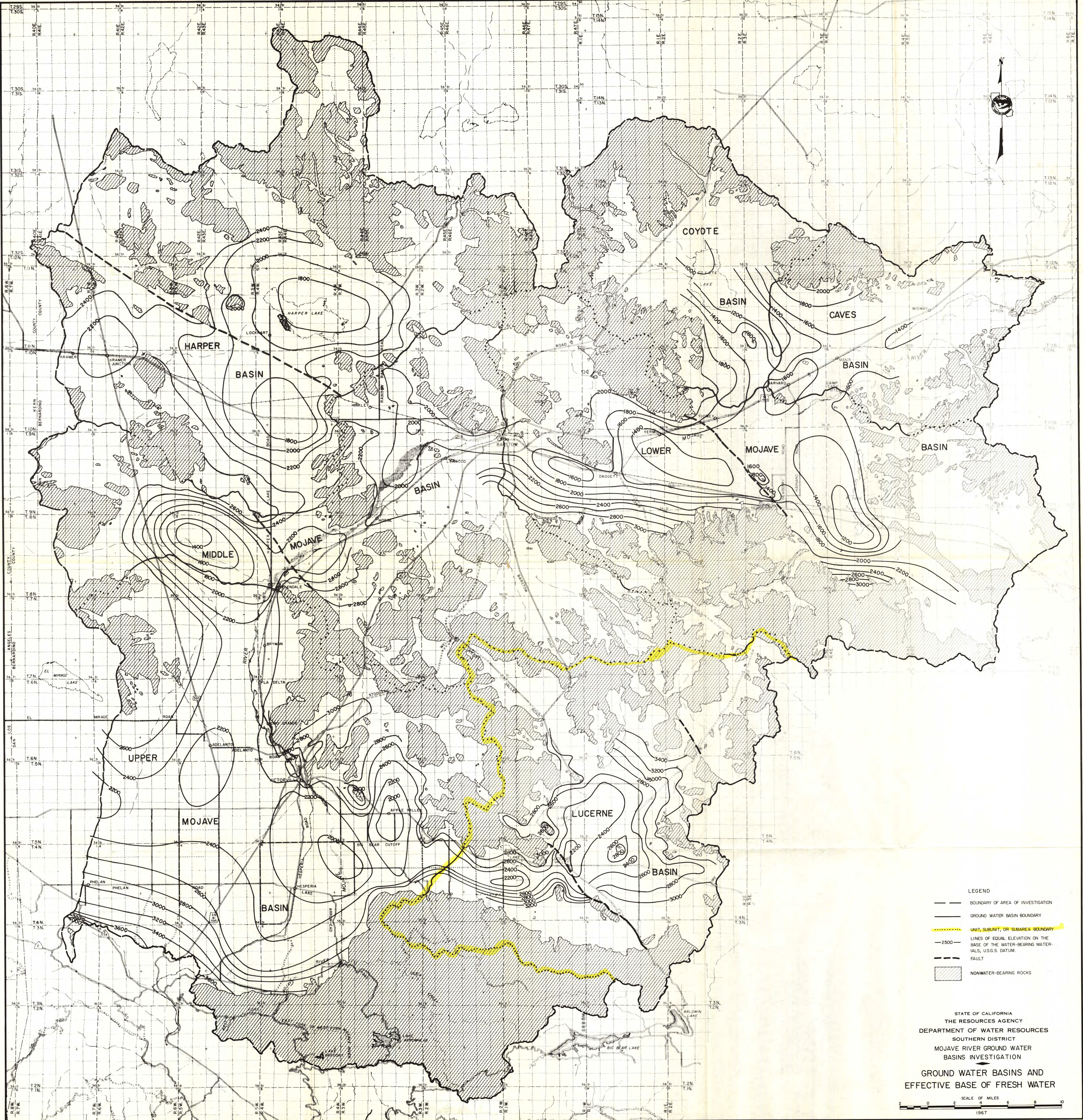


- LEGEND**
- Q0a RIVER DEPOSITS
 - Q0p PLAYA DEPOSITS
 - Q0s DUNE SAND
 - Q0l YOUNGER ALLUVIUM
 - Q0f YOUNGER FAN DEPOSITS
 - Q01 OLD LAKE AND LAKESHORE DEPOSITS
 - Q00 OLDER ALLUVIUM
 - Q0f OLDER FAN DEPOSITS
 - Q1s LANDSLIDE BRECCIA
 - Qs SHOEMAKER GRAVEL
 - Qh HAROLD FORMATION
 - Qb BASALT
 - Tr VOLCANIC ROCKS
 - Tc CONTINENTAL DEPOSITS
 - bc BASEMENT COMPLEX
 - BWS BASE OF WATER BEARING SEDIMENTS
 - FAULT

NOTE: GEOLOGIC SECTION LINES SHOWN ON PLATE 2

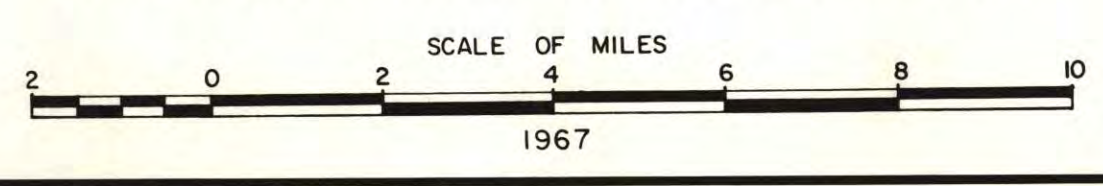
STATE OF CALIFORNIA
 THE RESOURCES AGENCY
 DEPARTMENT OF WATER RESOURCES
 SOUTHERN DISTRICT
 MOJAVE RIVER GROUND WATER
 BASINS INVESTIGATION
GEOLOGIC SECTIONS

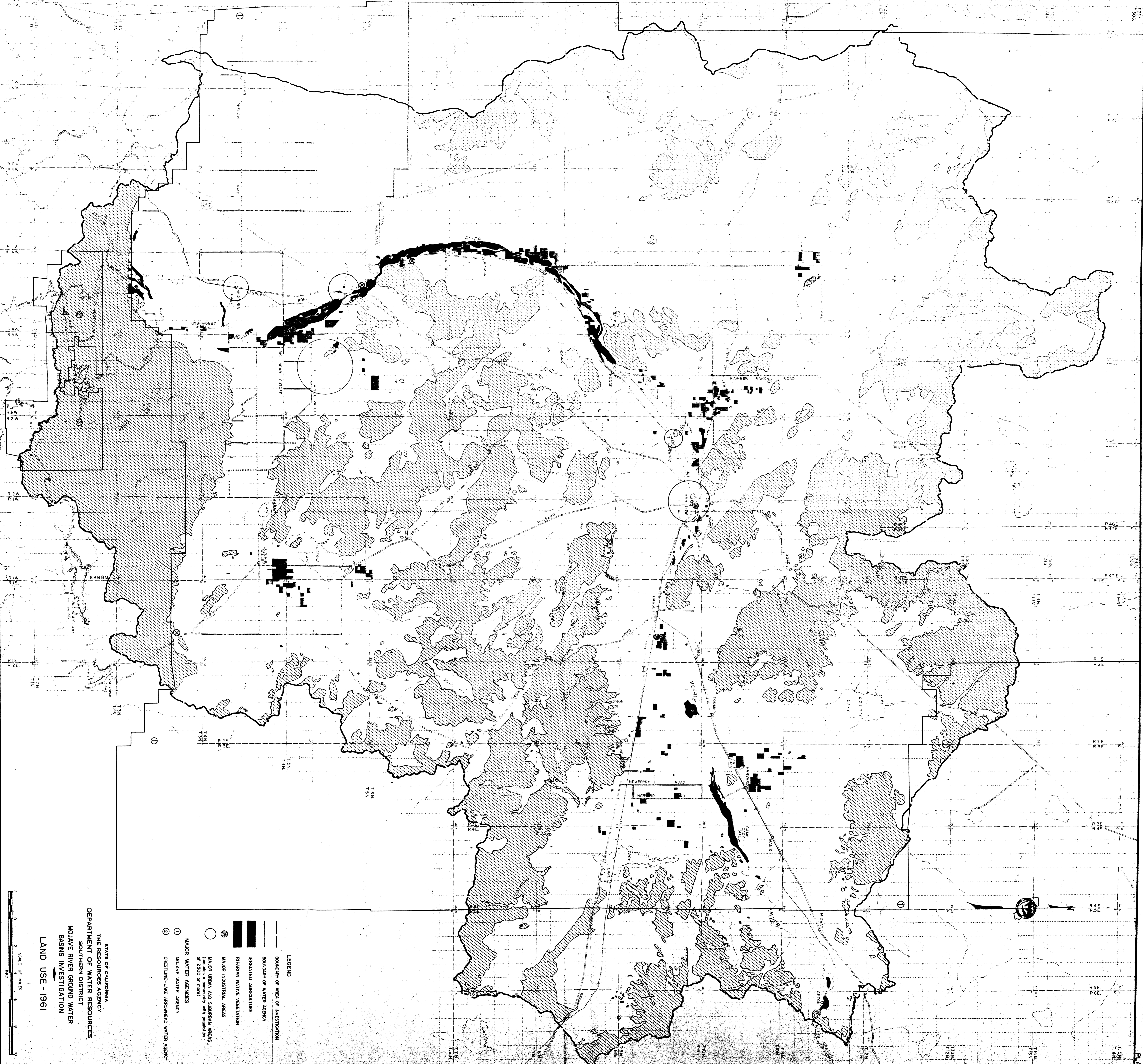




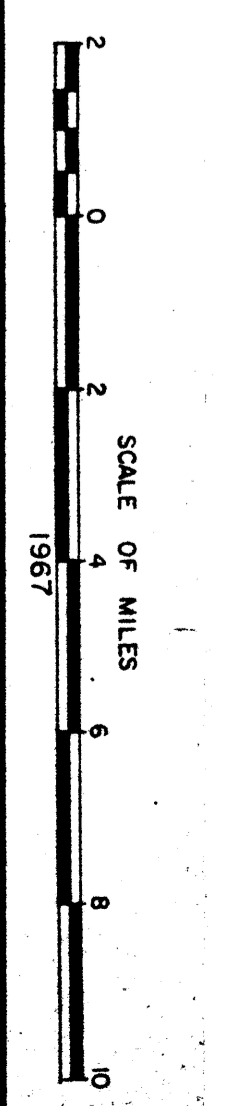
- LEGEND
- BOUNDARY OF AREA OF INVESTIGATION
 - GROUND WATER BASIN BOUNDARY
 - - - - - UNIT, SUBUNIT, OR SUBAREA BOUNDARY
 - - - - - LINES OF EQUAL ELEVATION ON THE BASE OF THE WATER-BEARING MATERIALS, U.S.G.S. DATUM.
 - - - - - FAULT
 - ▨ NONWATER-BEARING ROCKS

STATE OF CALIFORNIA
 THE RESOURCES AGENCY
 DEPARTMENT OF WATER RESOURCES
 SOUTHERN DISTRICT
 MOJAVE RIVER GROUND WATER
 BASINS INVESTIGATION
 GROUND WATER BASINS AND
 EFFECTIVE BASE OF FRESH WATER

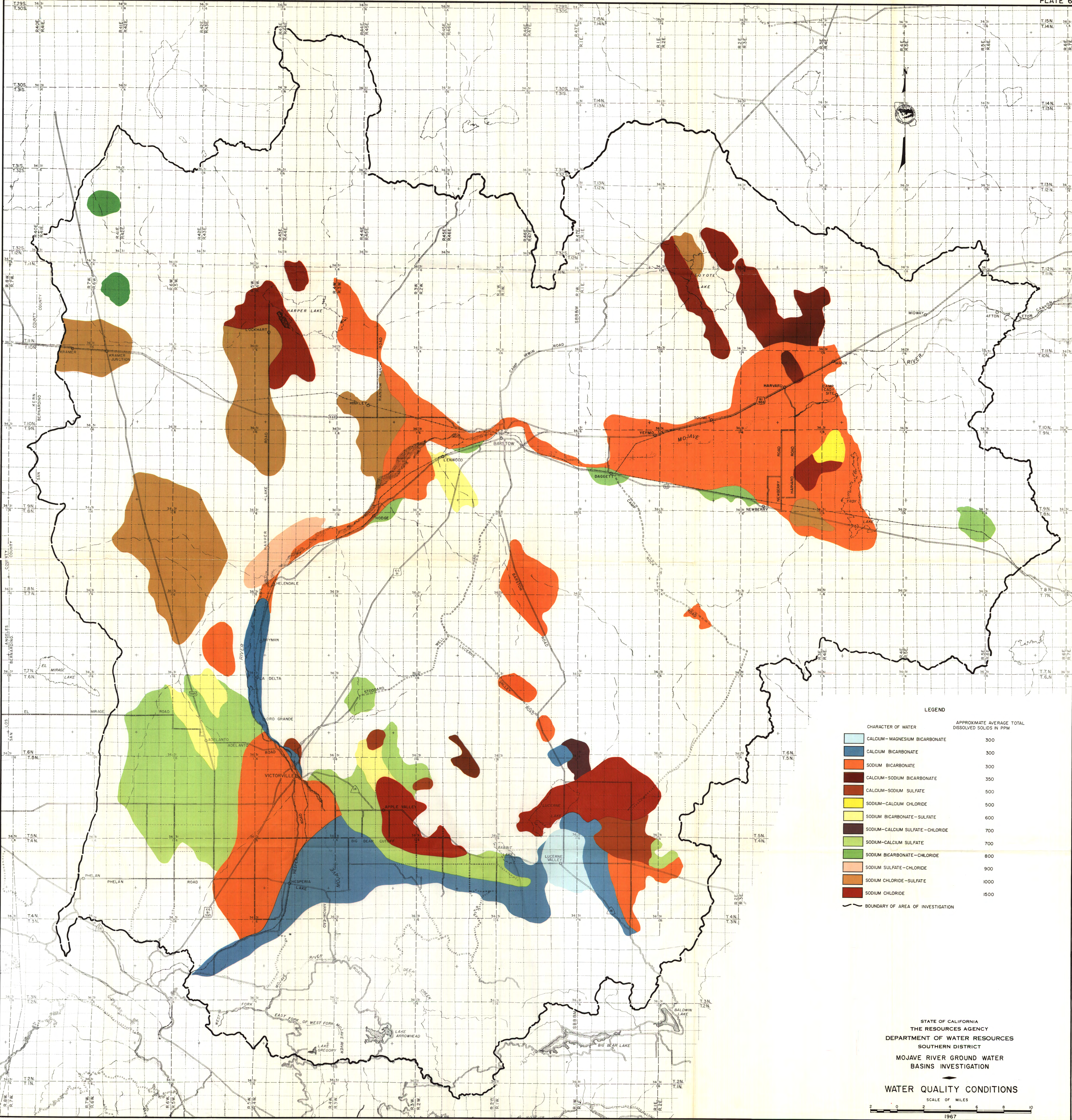




- LEGEND**
- BOUNDARY OF AREA OF INVESTIGATION
 - BOUNDARY OF WATER AGENCY
 - ▨ IRRIGATED AGRICULTURE
 - ▨ RIPARIAN NATIVE VEGETATION
 - ⊗ MAJOR INDUSTRIAL AREAS
 - MAJOR URBAN AND SUBURBAN AREAS (includes a community with population of 2500 or more)
 - ① MAJOR WATER AGENCIES
 - ② CRESTLINE-LAKE ARROWHEAD WATER AGENCY



STATE OF CALIFORNIA
 THE RESOURCES AGENCY
 DEPARTMENT OF WATER RESOURCES
 SOUTHERN RIVER DISTRICT
 MOJAVE RIVER GROUND WATER
 BASINS INVESTIGATION
LAND USE - 1961



LEGEND

CHARACTER OF WATER	APPROXIMATE AVERAGE TOTAL DISSOLVED SOLIDS IN PPM
CALCIUM-MAGNESIUM BICARBONATE	300
CALCIUM BICARBONATE	300
SODIUM BICARBONATE	300
CALCIUM-SODIUM BICARBONATE	350
CALCIUM-SODIUM SULFATE	500
SODIUM-CALCIUM CHLORIDE	500
SODIUM BICARBONATE-SULFATE	600
SODIUM-CALCIUM SULFATE-CHLORIDE	700
SODIUM-CALCIUM SULFATE	700
SODIUM BICARBONATE-CHLORIDE	800
SODIUM SULFATE-CHLORIDE	900
SODIUM CHLORIDE-SULFATE	1000
SODIUM CHLORIDE	1500

— BOUNDARY OF AREA OF INVESTIGATION

STATE OF CALIFORNIA
 THE RESOURCES AGENCY
 DEPARTMENT OF WATER RESOURCES
 SOUTHERN DISTRICT
 MOJAVE RIVER GROUND WATER
 BASINS INVESTIGATION

WATER QUALITY CONDITIONS
 SCALE OF MILES
 1967



- LEGEND**
- BOUNDARY OF AREA OF INVESTIGATION
 - GROUND WATER BASIN BOUNDARY
 - GROUND WATER SUBBASIN BOUNDARY
 - LINES OF EQUAL ELEVATION OF GROUND WATER LEVELS, U.S.G.S. DATUM.
 - ▨ NONWATER-BEARING ROCKS.

STATE OF CALIFORNIA
 THE RESOURCES AGENCY
 DEPARTMENT OF WATER RESOURCES
 SOUTHERN DISTRICT
 MOJAVE RIVER GROUND WATER
 BASINS INVESTIGATION

**GROUND WATER LEVEL CONTOURS
 1961**

SCALE OF MILES
 0 2 4 6 8 10
 1967