

# Water Year 2018 Hydrology

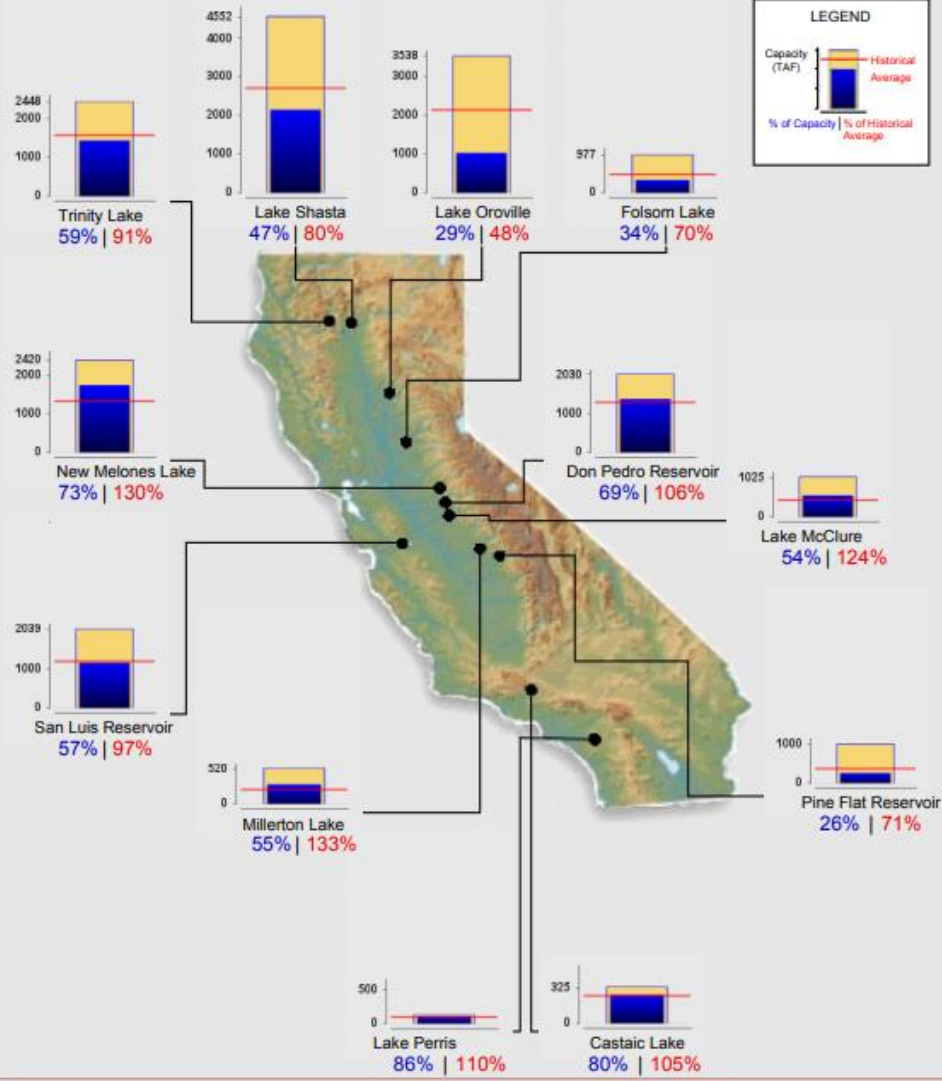




# Reservoir Conditions

Ending At Midnight - November 26, 2018

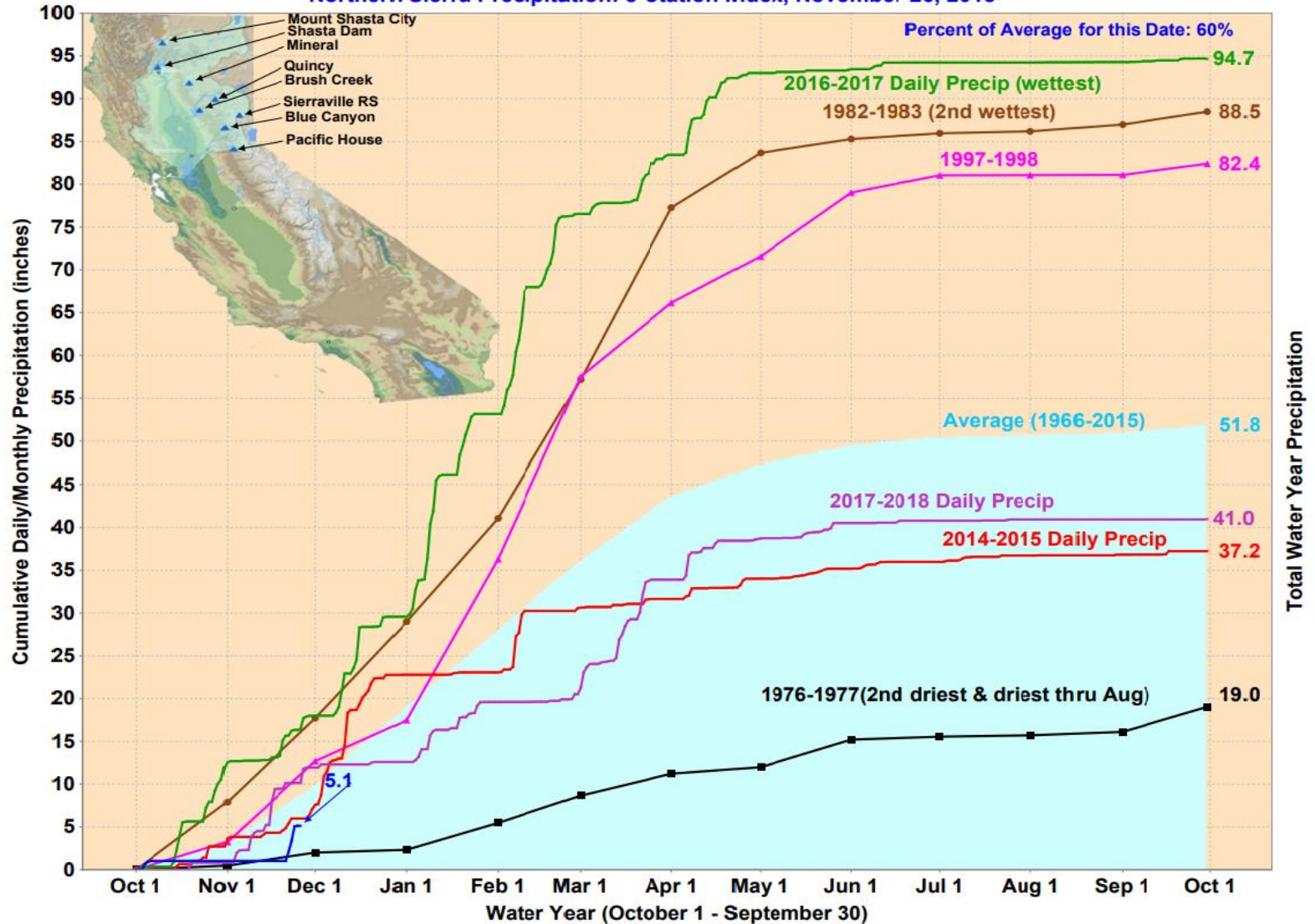
## CURRENT RESERVOIR CONDITIONS





# WY 2018 Precipitation 8-Station Index

Northern Sierra Precipitation: 8-Station Index, November 26, 2018



# WY 2018 Precipitation 8-Station Index

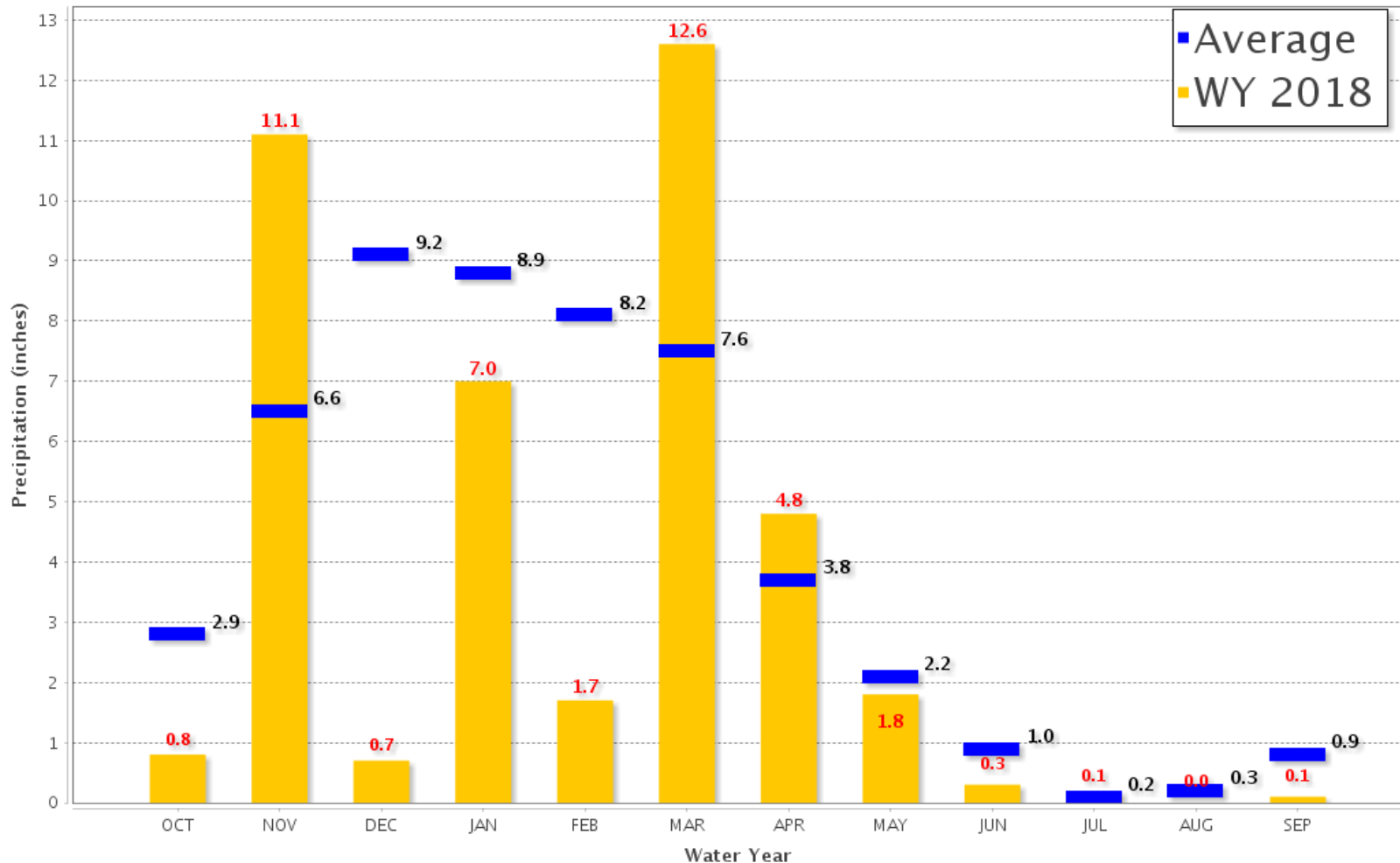


## Northern Sierra 8-Station

Precipitation Index for Water Year 2018 - Updated on September 30, 2018 10:45 AM

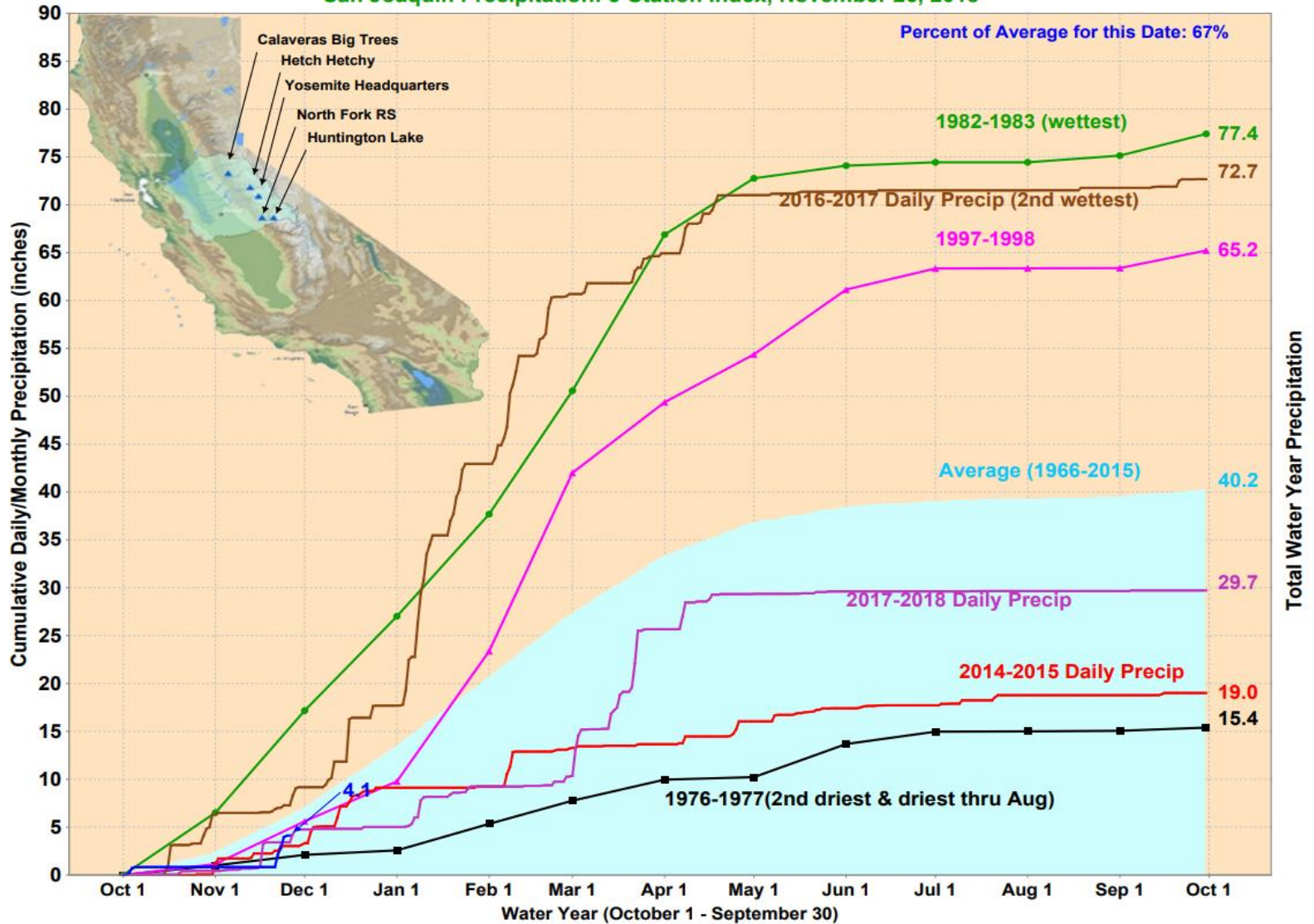
Note: Monthly totals may not add up to seasonal total because of rounding

Water Year Monthly totals are calculated based on Daily precipitation data from 12am to 12am PST



# WY 2018 Precipitation 5-Station Index

San Joaquin Precipitation: 5-Station Index, November 26, 2018



# WY 2018 Precipitation 5-Station Index

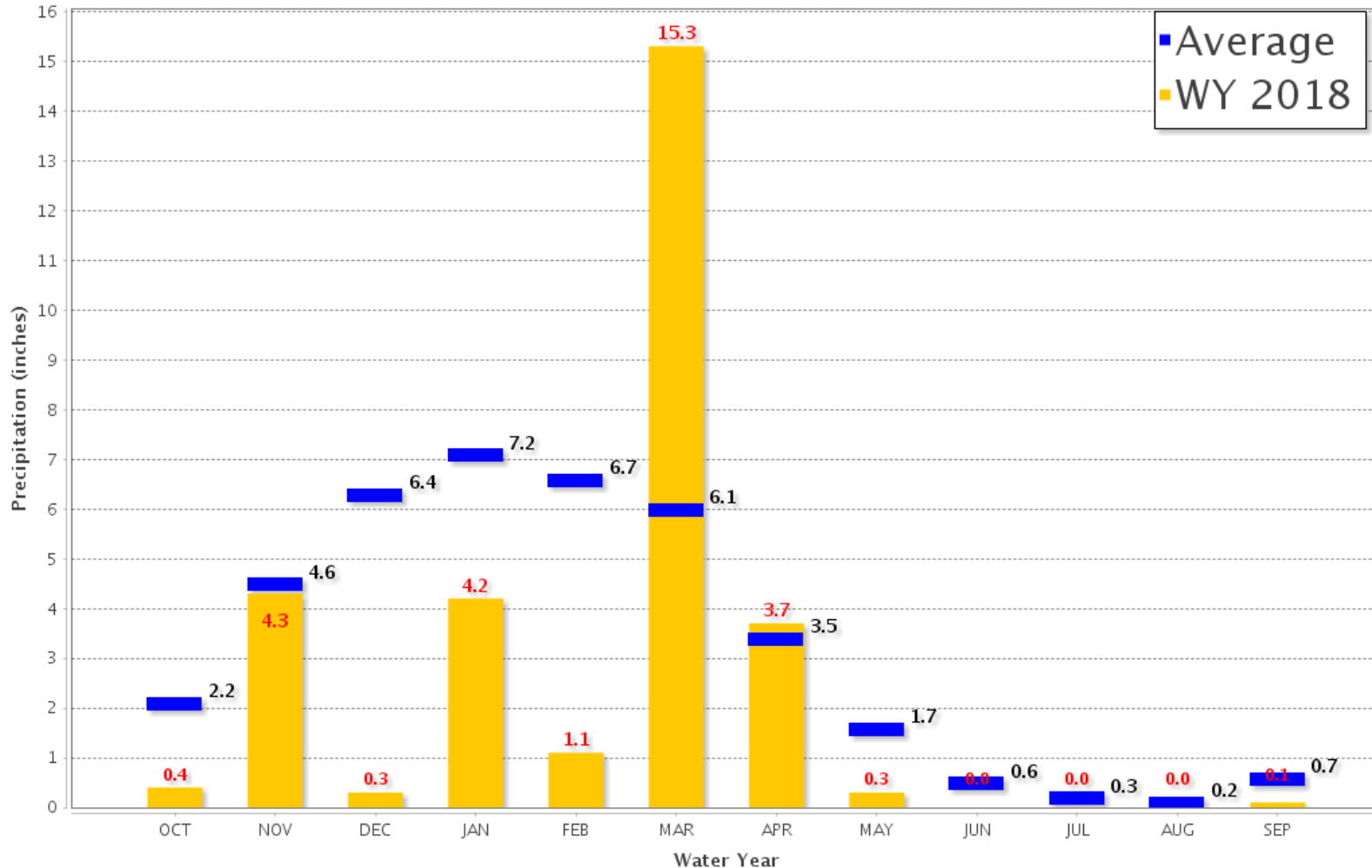


## San Joaquin 5-Station

Precipitation Index for Water Year 2018 – Updated on September 30, 2018 10:31 AM

Note: Monthly totals may not add up to seasonal total because of rounding

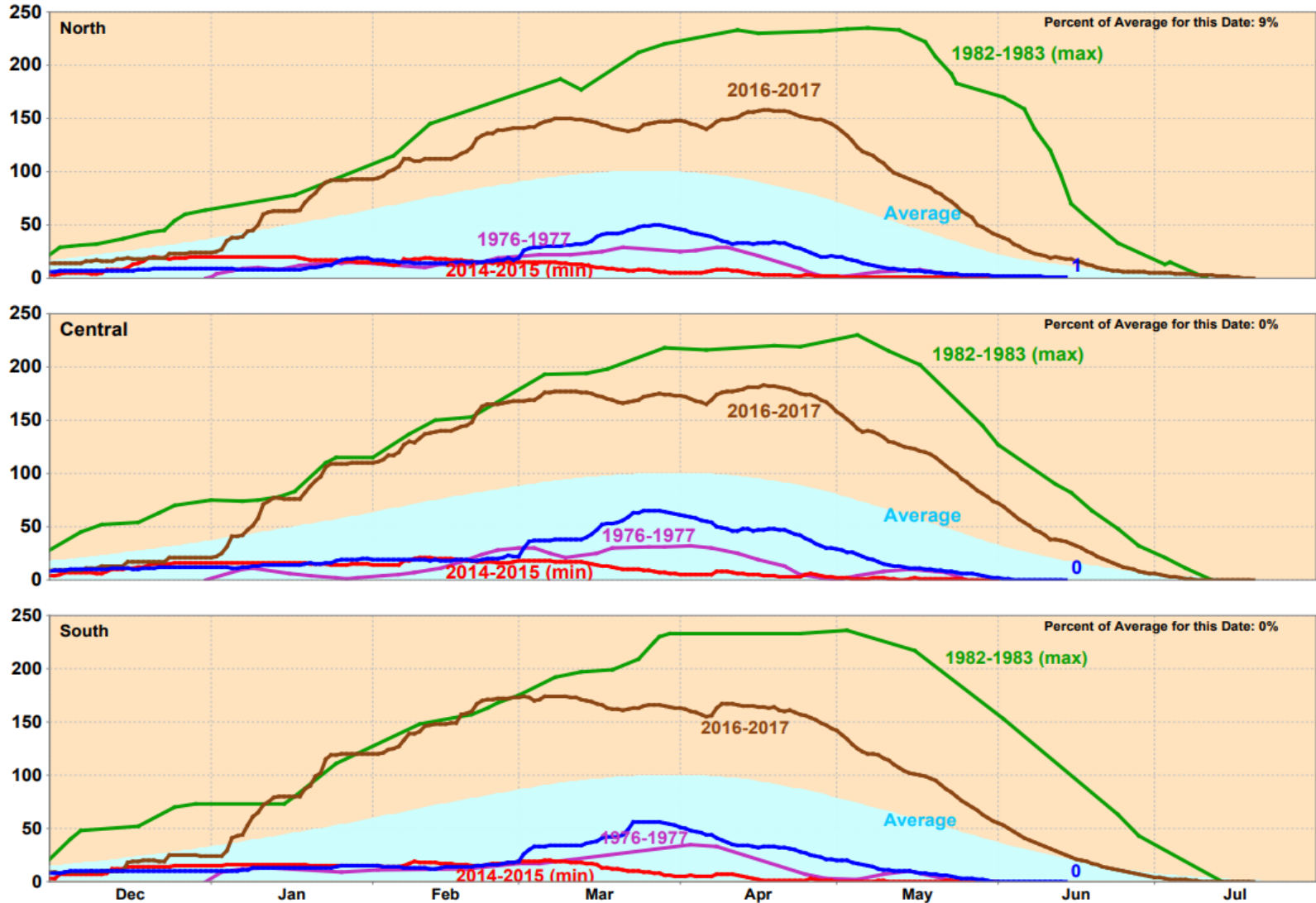
Water Year Monthly totals are calculated based on Daily precipitation data from 12am to 12am PST





# WY 2018 Snowpack

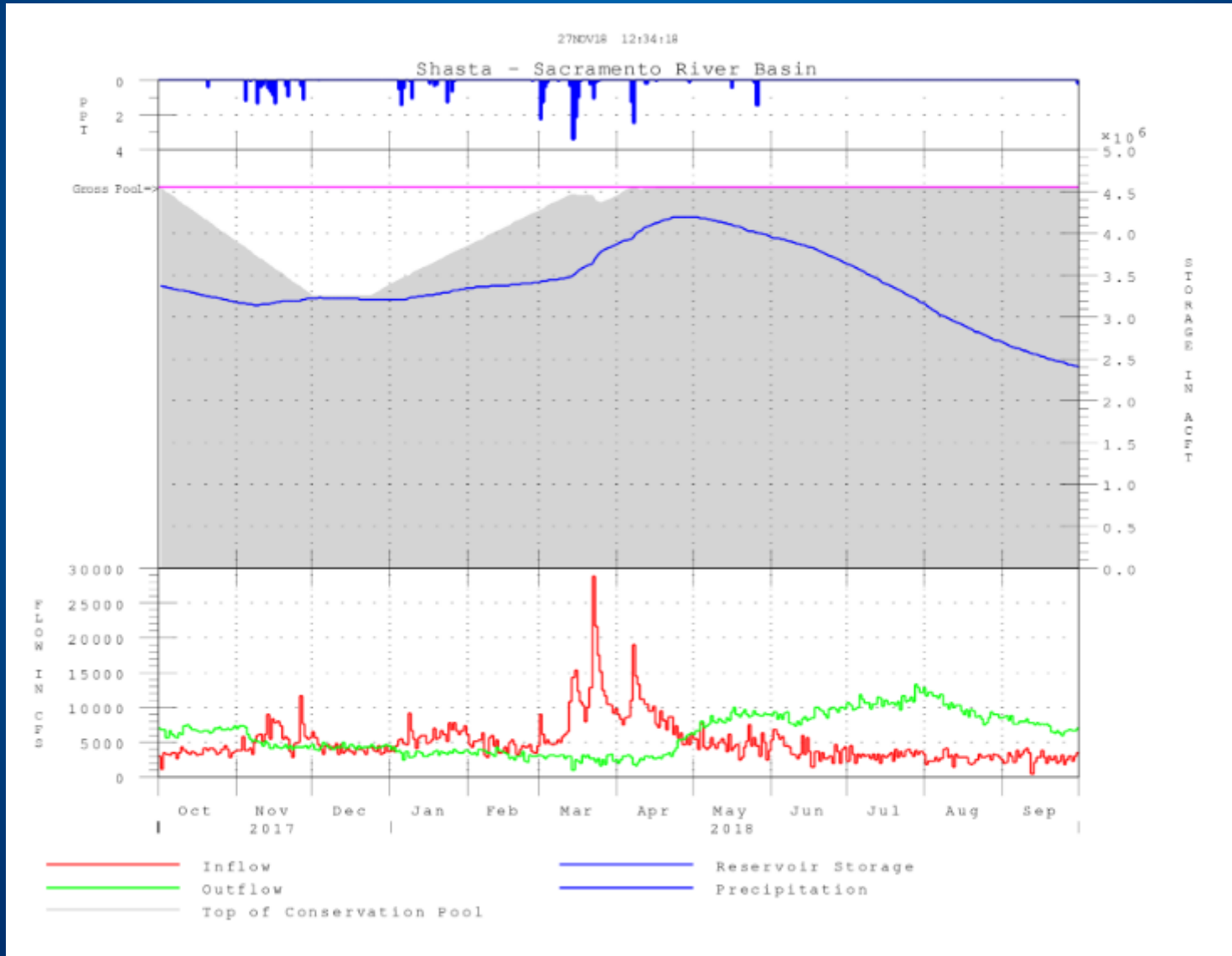
California Snow Water Content, June 14, 2018, Percent of April 1 Average



Statewide Percent of April 1: 0%

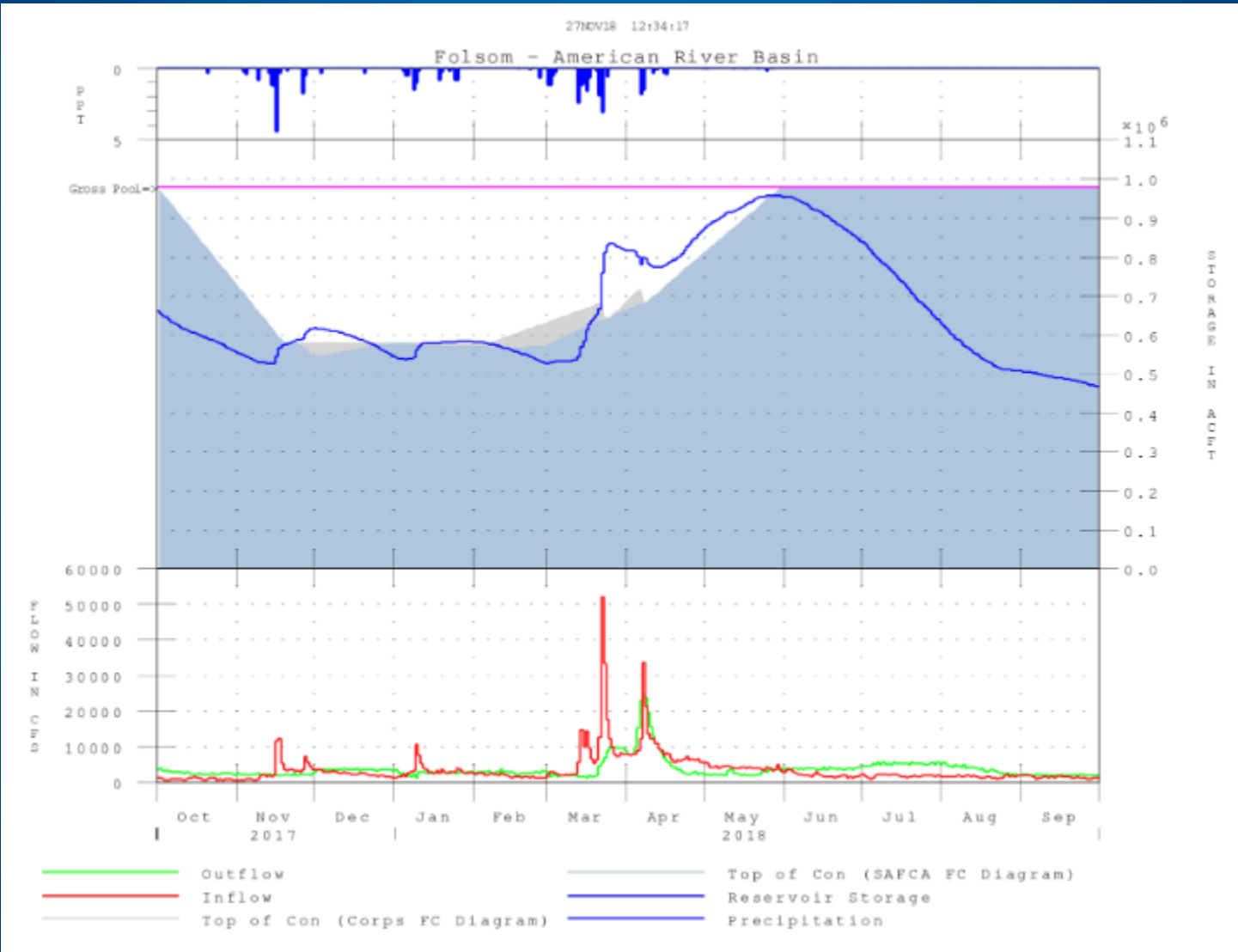
Statewide Percent of Average for Date: 0%

# Shasta WY 2018

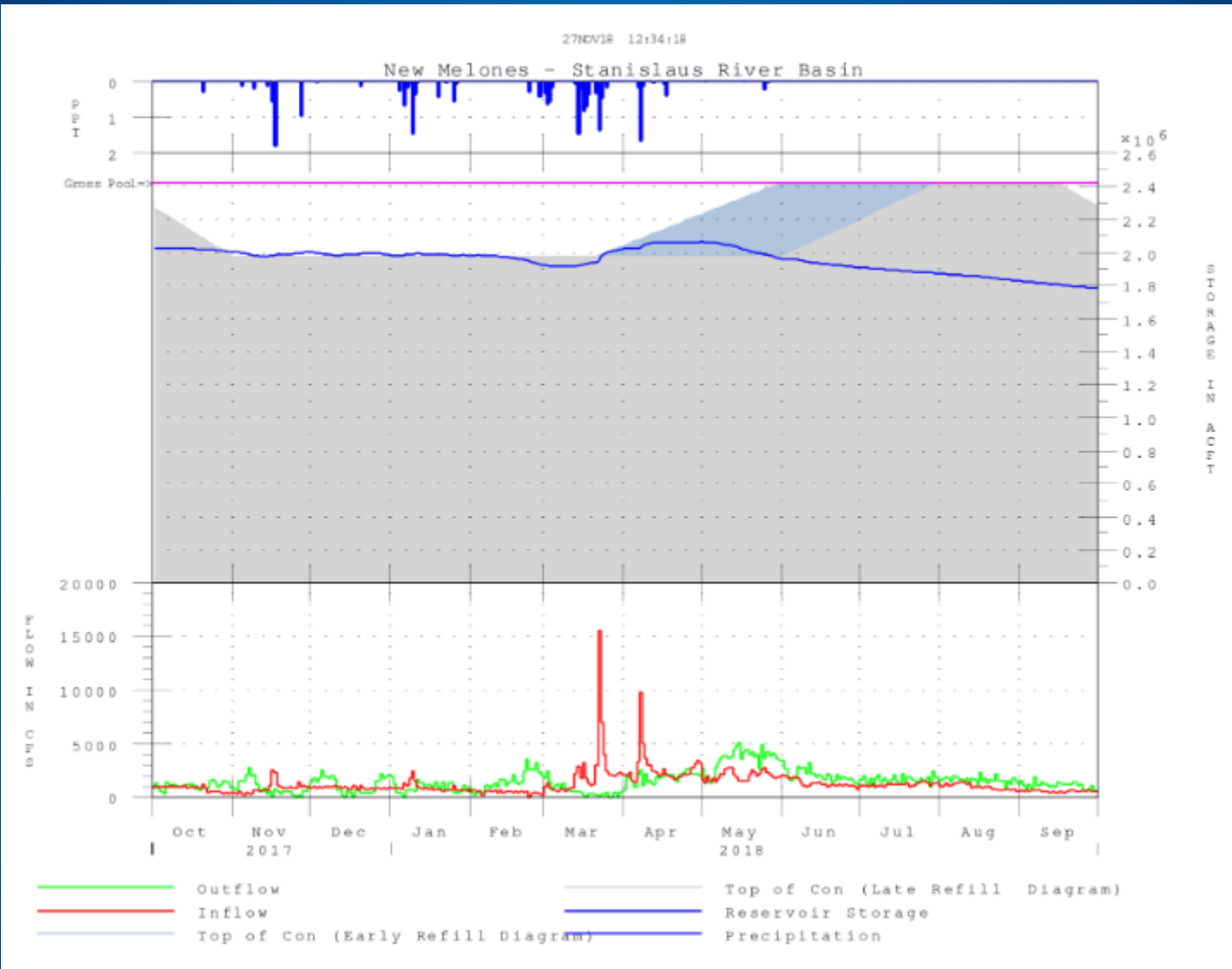




# Folsom WY 2018



# New Melones WY 2018



# Oroville WY 2018

