

PW 5.3:21-E

Pomona College Library  
Claremont, California

STATE OF CALIFORNIA  
DEPARTMENT OF PUBLIC WORKS

PUBLICATIONS OF THE  
DIVISION OF WATER RESOURCES  
EDWARD HYATT, State Engineer

BULLETIN No. 21-E

REPORT  
ON  
IRRIGATION DISTRICTS  
IN  
CALIFORNIA

For the Year 1933



PRICE 75 CENTS

CALIFORNIA STATE PRINTING OFFICE  
SACRAMENTO, 1934



STATE OF CALIFORNIA  
DEPARTMENT OF PUBLIC WORKS

---

---

PUBLICATIONS OF THE  
DIVISION OF WATER RESOURCES  
EDWARD HYATT, State Engineer

---

---

BULLETIN No. 21-E

REPORT  
ON  
IRRIGATION DISTRICTS  
IN  
CALIFORNIA

For the Year 1933

---

1934

TABLE OF CONTENTS

	<u>Page</u>
ORGANIZATION .....	3
FOREWORD .....	4
DIRECTORY OF IRRIGATION DISTRICTS .....	5

CHAPTER I

INTRODUCTION

The 1933 Irrigation Season .....	7
Farm Operations .....	7
Irrigation District Finances .....	9
California Districts Securities Commission .....	10
Irrigation Districts Association .....	11

CHAPTER II

DISTRICT ORGANIZATIONS

Districts Organized and Dissolved in 1933 .....	13
South Fork Irrigation District .....	14
Big Valley Irrigation District .....	17

CHAPTER III

STATISTICAL INFORMATION

Source of Supply, Storage and Distribution of Water .....	22
Irrigation District Crop Summary .....	23
Assessments, Water Tolls and Other Revenues .....	23
Bonds and Warrants .....	24

SUMMARY OF BOND DATA

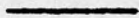
Total Issues Voted .....	25
Disposition of Bonds .....	25
Present Status of Bonds .....	25
Bonds Voted in 1933 .....	26
Bonds Certified in 1933 .....	26
Outstanding Bonds per Acre .....	27

TABLES OF STATISTICAL DATA

I. Data on Water Supply .....	29
II. Crop Report for 1933 .....	31
III. Summary of Assessments, Water Tolls, Delinquencies, etc. ....	33
IV. Data relating to Bonds and Warrants .....	35
V. Year formed, Area and Bond Obligations Per Acre .....	40

ORGANIZATION

EARL LEE KELLY ..... Director of Public Works  
EDWARD HYATT ..... State Engineer



A. N. BURCH ..... Irrigation Districts

## FOREWORD

This is the sixth of a series of publications issued by the State dealing with the history and activities of districts formed under the California irrigation district act. The earlier reports are presented in Bulletins 2 (1916) and 21 (1929) of the State Department of Engineering and Irrigation, and Bulletins 21-A (1930), 21-B (1931), 21-C (1932) and 21-D (1933) of the Division of Water Resources. Bulletin 2 is out of print, but a limited number of the Bulletin 21 series is available for distribution and may be obtained from the State Bureau of Publications and Documents, Sacramento. The present bulletin is presented for the purpose of bringing up to January 1st, 1934, historical and statistical data on California irrigation districts and briefly recording such other information as was obtained on irrigation district activities in 1933. The information from which this report is compiled was obtained from the irrigation districts and has been carefully checked and analyzed, and while it is believed to be substantially correct, there may be minor inaccuracies in individual cases. It is desired to express the appreciation of this office for the assistance of district officials in the work of gathering this information.

1930

DIRECTORY OF CALIFORNIA IRRIGATION DISTRICTS

Name of District	County	Estimated Population			District Officials			Office Address
		Inside Cities and Towns	Outside Cities and Towns	Total	President	Secretary	Manager or Engineer	
Alpaugh	Tulare		300	300	H. E. Sawyer	Mary B. B. Vallance	Paul Caldwell	Alpaugh
Alta	Tulare, Fresno, Kings	5,700	11,000	16,700	A. T. Crowther	E. Sibley	E. Sibley	298 North L Street, Dinuba
Anderson-Cottonwood	Shasta, Tehama	1,200	800	2,000	W. W. Trent	Carl F. Eaton	Clyde Smith	Anderson
Banta-Carbona	San Joaquin		595	595	F. D. Ryner	Elvira Hondaa	J. B. Knight	Box 327, Tracy
Bard (part of Yuma U.S. Project)	Imperial		1,000	1,000	S. M. Colby	W. C. Ross		Ross Corner, Yuma, Arizona
Barter Creek	Lassen		100	100	Alfred Luond	Harry S. Riddell	Harry S. Riddell	Susanville
Beaumont	Riverside	2,000	500	2,500	A. W. Kirk	E. D. Stahl	A. T. McGee	Beaumont
Big Springs	Siskiyou		150	150	Lloyd Fleisch	Roy E. Swigart		Montague
Big Valley	Lassen and Modoc		76	76	H. C. Jack	A. W. McKenzie	S. A. Mushen	Bieber
Browns Valley	Yuba		750	750	L. B. Gurney	Ray C. Burris	L. B. Gurney	Browns Valley
Butte Valley	Siskiyou	350	100	450	H. L. Nelson	M. A. Gilmer	M. A. Gilmer	MacDoel
Byron-Bethany	Contra Costa, S.J., Alameda	300	300	600	Geo. K. Anderson	G. A. Howard	V. L. Woolley	Byron
Camp Far West	Placer, Yuba		125	125	R. H. Durst	Robert Anderson	M. C. Polk	Wheatland
Carmichael	Sacramento		750	750	E. M. Lynch	Roy W. Sullivan	L. Williamson	Rt. 5 Box 1427 Sacramento
Carpenter	Orange	900	150	1,050	L. W. Evans	D. S. Smiley		Rt. 1 Box 388, Orange
Citrus Heights	Sacramento, Placer		939	939	J. A. Gray	Floyd J. Locher	R. A. Porch	R.F.D. 1, Box 161, Roseville
Compton-Delevan	Colusa		36	36	W. H. Lovelace	C. E. Ryan		405 Montgomery Street, San Francisco
Consolidated	Fresno, Tulare, Kings	9,000	17,500	26,500	L. C. Darling	A. R. Stedman	I. H. Teilman	Box 638, Selma
Coreoran	Kings		1,500	1,500	J. M. Hansen	D. I. Drown	H. H. Holley	Coreoran
Cordua	Yuba		55	55	Thos. Mathews	Jeannette Frank		Marysville
Deer Creek	Tehama		50	50	Charles Dicus	Mabel Hall		Suite 1, 304 Broadway, Chico
East Contra Costa	Contra Costa	500	700	1,200	Arthur Honegger	Margaret Wallace	G. H. Jones	Brentwood
El Camino	Tehama		600	600	Asa Foster	Roy Pyle	Roy Pyle	Gerber
El Dorado	El Dorado	2,500	1,200	3,700	W. S. Bantz	F. N. Hosking	F. N. Hosking	Box 398, Placerville
El Nido	Merced		300	300	Geo. T. McFarland	A. L. Cowell	James Bucholz	El Nido
Empire West Side	Kings		55	55	J. R. Newton	E. B. Hoey	John Benedict	Stratford
Fairoaks	Sacramento	1,800	1,800	1,800	E. C. Phoenix	Guy L. Camden	E. E. Fulton	Fairoaks
Fallbrook	San Diego	700	500	1,200	B. C. Davies	C. C. Cook		Fallbrook
Fresno	Fresno	50,000	50,000	50,000	A. B. Tarpey	Jewel War	Geo. L. Swendsen	1001-9 Griffith-MacKenzie Bldg. Fresno
Glenn-Colusa	Glenn, Colusa		1,500	1,500	S. S. Havenor	H. R. Allard	R. S. Edwards	Willows
Grenada	Siskiyou	100	100	200	C. J. Strong	Stuart Taylor	G. Inabnit	Grenada
Hot Spring Valley	Modoc		250	250	S. B. Kelley	A. K. Wylie	S. B. Kelley	Alturas
Imperial	Imperial	30,427	30,476	60,903	Evan T. Hewes	W. W. Goodson	M. J. Dowd	El Centro
Island No. 3	Kings		300	300	J. B. Roberts	Mrs. Nellie Kaiser		Kingsburg
Jacinto	Glenn		325	325	W. W. Koehler	Rosco Caldwell	Rosco Caldwell	Glenn
James	Fresno		150	150	Peter Rusconi	N. D. Ingham	N. D. Ingham	San Joaquin
La Canada	Los Angeles	900		900	Dan W. Green	F. E. Slutman		4711 Castle Road, La Canada
Laguna	Fresno, Kings		3,000	3,000	L. L. Garner	Bessie L. Scutt	A. J. Nielsen	Rt. 1 Box 197, Laton
Lakeland	Kings		15	15	H. F. Libby	Craigie S. Sharp	H. F. Libby	Rm. 28, Wealth Center Bldg. Hanford
Lakeside	San Diego	200		200	O. F. Einer	H. P. Schiller	H. P. Schiller	Lakeside
La Mesa, Lemon Grove and S. V.	San Diego	4,000	4,000	8,000	F. R. Beatty	Ruth C. Drew	C. Harritt	4769 Spring Street, La Mesa
Lemoore	Kings		1,500	1,500	W. S. Winger			Lemoore
Linden	San Joaquin	50	400	450	Ralph G. Houston	A. L. Cowell		912 California Building, Stockton
Lindsay-Strathmore	Tulare	40	1,500	1,540	Ernest L. Daniels	H. R. Husbart	Geo. W. Trauger	P. O. Box 655, Lindsay
Littlerock Creek	Los Angeles		150	150	Vernon A. Carr	W. J. Kling		Littlerock
Lucerne	Kings		1,200	1,200	W. L. Haag	S. E. Railsback		Hanford
Madera	Madera	5,765	6,770	12,535	T. S. Coffee	Harry Barnes	Harry Barnes	120 So. D Street, Madera
Maxwell	Colusa		6	6	Dr. C. E. Schoff	Thos. J. Hately		1710 10th Street, Sacramento
Merced	Merced	10,000	10,000	20,000	D. K. Barnell	H. P. Sargent	L. W. Hesse	P. O. Box 759, Merced
Modesto	Stanislaus	17,000	6,000	23,000	J. S. West	C. S. Abbott	N. M. Cecil	Modesto

DIRECTORY OF CALIFORNIA IRRIGATION DISTRICTS (Continued)

Name of District	County	Estimated Population			District Officials			Office Address
		Inside Cities and towns	Outside Cities and Towns	Total	President	Secretary	Manager or Engineer	
Mojave River	San Bernardino		100	100	T. J. Thomas	J. S. Nation	W. E. Fussing	518 E. 10th Street, Upland
Montague	Siskiyou	500	175	675	G. W. Dwinnell	Roy E. Swigart		Montague
Maglee-Burk	San Joaquin		150	150	V. J. Reeve	George Wadsworth		Roberts Building, Tracy
Nevada	Nevada, Placer		5,000	5,000	Thos. Mulcahy	Mrs. B. W. Baldwin	Wm. Durbrow	144 S. Auburn St., Grass Valley
Newport Heights	Orange	1,500		1,500	Geo. A. Waterman	C. R. Van Dayn		Costa Mesa
Newport Mesa	Orange	350		350	Chas. W. TeWinkle	D. J. Dodge		Box 305, Costa Mesa
Oakdale	Stanislaus, San Joaquin	3,600	3,400	7,000	W. T. Kerr	T. S. Fendergrass	R. E. Hartley	Oakdale
Oroville-Wyandotte	Butte	350	450	800	Carleton Gray	W. J. Monro	R. C. Tyler	Oroville
Owens Valley	Inyo	1,500	1,000	2,500	B. E. Johnson	Dell Randall		Bishop
Palmdale	Los Angeles	660	109	769	F. J. Ikeler	H. P. Schoeller	H.P. Schoeller	Palmdale
Palo Verde	Riverside	1,200	2,500	3,700	L. A. Hauser	Wayne H. Fisher	C. P. Mahoney	Box 38, Blythe
Paradise	Butte	50	1,450	1,500	D. B. Barnes	H. S. Clewett	J. E. Alley	Paradise
Potter Valley	Mendocino	100	450	550	J. E. March	Fred L. Bosworth		Potter Valley
Princeton-Codora-Glenn	Colusa, Glenn	250	750	1,000	W. H. McAuslan	W. G. Poage	J. F. Petty	Princeton
Provident	Glenn, Colusa		50	50	Chas. Clark	L. M. Benoit	T. E. Balch	Willows
Ramona	San Diego	600		600	Ralph Jasper	Ruby Bargar-Stephen	J. C. Bargar	Ramona
Red Rock Creek	Lassen				John K. Enebae			Susanville
Richvale	Butte	122	100	222	J. E. Baker	Alvin L. Harry	Alvin L. Harry	Richvale
Riverside	Fresno		2,500	2,500	L. P. Adams	Tina Z. Cushman		Riverdale
Round Valley	Inyo, Mono				W. A. Roberts	Caroline Arcularius		Bishop
San Dieguito	San Diego	800	1,600	2,400	Chas. H. Webster	Ruth Helen White	F. H. Tolle	Box 207, Encinitas
Santa Fe	San Diego	560	240	800	Ira E. Conner	W. O. Boettiger	W. O. Boettiger	Rancho Santa Fe
San Ysidro	San Diego	1,200		1,200	O. W. Porter	L. Judd		San Ysidro
Scott Valley	Siskiyou		100	100	C. F. Bryan	H. G. Reynolds		Fort Jones
Serrano	Orange		470	470	Willard Smith	F. H. Collins		R. F. D. 1, Orange
South Fork	Modoc		75	75	Frank McArthur	C. S. Baldwin	S. A. Mushen	Alturas
South Montebello	Los Angeles	850		850	Al C. Cook	Mrs. Sarah F. Becker	W. S. Duncan	Rt. 1 Box 1110, Montebello
South San Joaquin	San Joaquin	3,500	10,000	13,500	F. E. Wolfe	S. L. Steele	George K. Parker	Manteca
Stinson	Fresno	50	125	175	Wm. H. Noble	R. M. Bostwick	W. F. Bryant	Pacific Southwest Bldg. Fresno
Stratford	Kings				D. C. Jones	C. B. Fain		Stratford
Table Mountain	Butte		7	7	Ralph Christensen	Ruby Breesse	C. C. Breesse	Oroville
Terra Bella	Tulare	300	400	700	R. C. Gunnison	E. H. Robinson	I. H. Althouse	P. O. Box 125, Terra Bella
Thermalito	Butte		1,200	1,200	M. Hodgson	Raymond A. Leonard	W. B. Taylor	Oroville
Tracy-Glover	San Joaquin		150	150	Ole Klanderud	George Wadsworth		Roberts Building, Tracy
Tranquillity	Fresno	175	175	350	J. A. Benkert	J. E. Tuttle	H. M. Crooker	Tranquillity
Tulare	Tulare	600	2,400	3,000	E. A. Hesseltime	Glenn L. Moran	C. H. Slaughter	P. O. Box 477, Tulare
Tule	Lassen	20	100	120				Susanville
Turlock	Stanislaus and Merced	10,000	20,000	30,000	D. C. Thornburg	Mrs. Anna Sorensen	R. V. Meikle	117 W. Main Street, Turlock
Vandalia	Tulare		150	150	Walter D. Emory	H. C. Pegram	I. H. Althouse	Box 1026, Porterville
Vista	San Diego	600	1,792	2,392	L. R. Patterson	W. O. Bissinger	Chas. W. Bell	Vista
Walnut	Los Angeles		300	300	L. R. Paxton	Laura E. Paxton		R.F.D. Box 670, Rivera
Waterford	Stanislaus	280	856	1,136	E. Whitney	O. W. Quinley	W. Lehmkuhl	Box 157, Waterford
West Side	San Joaquin		1,060	1,496	M. B. Reece	Wylsay R. Hansen		Tracy
West Stanislaus	Stanislaus, Merced		350	400	W. W. Cox	Elbridge Smith	W. F. Woolley	Westley
Woodbridge	San Joaquin		200	200	W. J. Robinson, Jr.	Olla L. Strother	Frank Davis	Rt. 2 Box 67, Lodi
Totals, irrigation districts		121,835	219,507	341,342				
Buena Vista Water Storage	Kern	130	1,200	1,330	J. LeRoy Nickel, Jr.	J. E. Wooley	M. N. Krag	Buttonwillow
Tulare Lake Basin Water Storage	Kings		25	25	Harry Lee Martin	Dan Hadsell	Ray May	Hanford



## CHAPTER I

### INTRODUCTION

#### The 1933 Irrigation Season

The spring started with cold weather, and unseasonably cool weather continued well into the summer months, resulting in the late maturing of crops. This, however, did not generally affect fruit and other crops, except some truck crops which were rendered off-season. The few periods of high temperature in the late summer resulted in only slight damage to crops. The extreme freeze in December, 1932, in some sections of the northern part of the State, which caused the damage or loss of citrus and olive trees, although it had little effect on the State as a whole, worked a serious hardship in individual cases. While the average of the precipitation on the watersheds from which the principal supplies for irrigation are drawn was less than one-half the annual average, it was so distributed that watersheds from which the water for irrigation was most needed furnished relatively high stream flows. The situation was further relieved by the cool weather which prevailed in the spring and early summer months. Throughout the State generally there was little damage from water shortage, although there was not a sufficient supply in many cases.

#### Farm Operations

A review of the California cooperative crop reports for 1933 indicates that the fruit and nut industries were decidedly more satisfactory than for the previous year, and that while there was an increase

of less than 2% in total production, the farm values in these industries increased 19% over those of 1932. It is reported that while in 1932 a total of about 414,000 tons of various fruits were unharvested due to lack of market demands, in 1933 this tonnage was reduced to only about 106,000 tons. Although the markets for many fruits were far from satisfactory, the increase in returns to growers indicates a decided improvement in this industry.

In 1933 the acreage in truck crops was about 10% less than for the previous year, but yields were generally better. Market conditions and prices were about the same as for 1932, and in general no improvement was shown.

Both 1933 and 1932 were favorable for the production of field crops, and the reduction of 5.5% in the acreage in these crops in 1933 resulted in a corresponding reduction in crop production. Notwithstanding the reduction in acreage cropped, farm values of field crops in 1933 show an increase of 16.5% over the previous year.

The combined production of meat animals and wool in the State for 1933 was valued about 4% higher than for the previous year. At that the production of meat animals on the whole was unprofitable, cattle growers taking the worst of the deal and sheep growers the best of it. Dairying showed no profits, and poultry raisers were fortunate if returns from their products balanced costs.

On the whole, however, results of farm operations in 1933 are encouraging, in that they show a decided halt in the downward trend of farm values, a more complete absorption of farm products, increased cooperative efforts on the part of producers and a general bettering of

the conditions to be met in financing the business of farming.

### Irrigation District Finances

In 1932 there were thirty-seven districts listed in default and this increased to forty-eight in 1933. This figure includes many districts which are in technical default pending completion of adjustment or refunding plans approved by bondholders' committees. Among such districts are the Imperial, Merced and Palo Verde irrigation districts. The total amount of bond principal due from the districts listed in this report for the year ending January 1, 1934, was approximately \$905,000 of which \$294,000 or about 32% was paid. There was due for bond interest accruing in that year, approximately \$5,400,000, of which \$3,000,000, or 55%, was paid. The sum of all bonds and interest in default, together with outstanding registered warrants, as of January 1, 1934, was \$9,962,647. The sum of all revenues reported collected in 1933 was \$8,668,216, and cash expenditures reported were \$8,842,407.

The approval on June 16, 1933, of the amendment to section 36 of the Emergency Farm Mortgage Act, authorizing the Reconstruction Finance Corporation to make loans not exceeding \$50,000,000 to drainage, reclamation and irrigation districts for the purpose of refunding the outstanding indebtedness of such districts, resulted in great activity during the latter part of the year, in efforts to readjust the finances of districts in this State. It was realized from the first that the appropriation was insufficient to provide for the relief of all districts entitled to consideration and that additional funds would be required to fully extend the benefits of the act.

In order to avail themselves as far as possible of the present emergency appropriation, as well as of any additional funds that may be made available, thirty-seven irrigation districts and eleven reclamation and drainage districts in California had by the end of January, 1934, made application to the R.F.C. for loans to refinance their outstanding bond obligations. The total of the loans applied for by irrigation districts was \$32,044,924, and by reclamation and drainage districts, \$5,708,132. The number of irrigation district applications reported approved was eight, for the grant of loans in the total amount of \$3,069,317. One reclamation district loan of \$250,000 was approved.

#### California Districts Securities Commission

Plans for refunding the outstanding obligations of five irrigation districts were approved by the commission, i.e., Merced, East Contra Costa, West Stanislaus, Vandalia and Byron-Bethany; and validation orders were issued for refunding bonds of Grenada, Terra Bella, West Stanislaus, Palmdale and Vandalia irrigation districts. Original bond issues for \$250,000 by the West Stanislaus and \$76,000 by the East Contra Costa irrigation district were consented to by the commission. In both instances the bonds were to be used in support of applications to P.W.A. for funds to be used in construction work.

Contracts entered into by irrigation districts were approved as follows: Nevada for the purchase of the Gold Hill system from the Pacific Gas and Electric Company; Lindsay-Strathmore, compromise of certain water stock litigation with Consolidated Ditch Company and agreement with Tulare irrigation district relative to the respective water rights of the two districts; Santa Fe, modification of agreement between

the irrigation district and the City of San Diego.

A schedule of sinking fund payments for the refunding bonds of the East Contra Costa irrigation district was approved, as was also the transfer of funds from the construction to general fund by the El Dorado irrigation district.

At the request of the directors of eighteen irrigation districts, such districts came under the control of the commission as provided by section 11 (as repealed and added in 1933) of the Districts Securities Commission Act. Investigations were made and reports rendered to the Commission on each district and modified assessments for 1933-1934 were approved for the following named districts: Banta-Carbona, Big Springs, Carmichael, Citrus Heights, Corcoran, Cordua, Jacinto, La Mesa, Lemon Grove and Spring Valley, Lindsay-Strathmore, Merced, Montague, Oroville-Wyandotte, San Dieguito, Santa Fe, Thermalito, Tracy, Waterford and West Side.

#### California Irrigation Districts Association

Two meetings of the association were held in 1933, one at Sacramento March 9, 10 and 11, and another at Fresno November 24. The first meeting was given over largely to the consideration of some ninety bills then pending before the Legislature and directly or indirectly affecting irrigation districts. Twenty-one of these bills received the approval of the association. A. P. Tarpey, president of the Fresno irrigation district board was elected president of the association, vice Wm. Durbrow who had served the association continuously for ten years in that capacity, but declined to be a candidate for the ensuing term. J. R. Chance, director of Turlock irrigation district, was elected vice-

president and W. D. Wagner, incumbent, secretary-treasurer.

At the Fresno meeting, G. H. Russell, senior engineer appraiser for the Federal Land Bank in the eleventh district, explained why the land bank could make loans in certain irrigation districts while in others it was compelled to refuse such loans. The secretary reported upon the status of applications to the Reconstruction Finance Corporation for loans to refund the outstanding obligations of irrigation districts, and also upon the plans of the national drainage association to obtain an additional federal appropriation of funds to be used for this purpose. The association was instructed to file court proceedings to test the constitutionality of Assembly Bill No. 305, which provides that matured bonds and coupons may be used in payment of that portion of an assessment allotted to bond service.

## CHAPTER II

### DISTRICT ORGANIZATIONS

Two irrigation district organizations were dissolved during the year, namely: Foothill district, Tulare and Fresno counties and Hemet district, Riverside County. The first named district was formed in 1920 and contained an area of 50,687 acres east of Alta irrigation district, and was organized primarily for the purpose of participating in Pine Flat storage. Bonds in the amount of \$2,270,000 were voted, but efforts to obtain a water supply proved futile and no bonds were sold. The district was dissolved by vote of 292 for and 13 against dissolution at an election held July 18, 1933. The Hemet district contained 9800 acres surrounding the town of Hemet. Organization carried at an election called by the supervisors September 6, 1927. Suit was brought in the Superior Court to test the legality of the formation of the district. A final decision rendered in 1933 declared the provisions of the irrigation district act had not been complied with in the proceedings for organizing the district.

The Board of Supervisors of Modoc County, on December 7, 1933, found for the sufficiency of a petition for the formation of the South Fork irrigation district, and referred the same to the State Engineer, who, upon an investigation of the project, reported favorably. Organization was carried on February 9, 1934, at an election called by the supervisors.

The Big Valley irrigation district, located in Lassen and

Modoc counties, was organized in 1925 and remained inactive until 1933, when measures were initiated to obtain a much needed supplemental water supply through storage on Pit River.

More particular details of the above irrigation districts follow:

#### SOUTH FORK IRRIGATION DISTRICT

Location: Along the South Fork of the Pit River, extending about 10 miles north from the town of Likely in Modoc county. (See Map, Page 20.)

Date of organization election: February 9, 1934.

Gross area: 12,964 acres.

Post office: Likely.

Railroad transportation: Southern Pacific.

History: The first settlements were made on the Pit River about 1871 in the vicinity of Likely and in Big Valley near Bieber. The South Fork irrigation district includes most of the basin of the South Fork of the Pit River. This basin was originally a swamp, overgrown with tules and marsh vegetation. The flow of the South Fork spread through the basin in several channels and the major portion of the area was rendered marshy and insusceptible to cultivation. About 1890, through private effort, the land was reclaimed by the construction of two drainage canals, one on the east and one on the west side of the swamp area. These canals serve not only to drain the land, but are of sufficient capacity to carry the ordinary flood flow of the South Fork and prevent its spreading over the basin. They also serve as main canals for conveying irrigation water to the reclaimed land.



Soil and Topography - The district consists of a strip of level valley land about ten miles long with varying width. In elevation the land ranges from about 4520 to 4470. The area is practically all composed of loams and silt loams of great depth. There are detached areas of about 2000 acres of sandy and gravelly loams and about 900 acres of swamp lands. A soil survey made in 1931 by the University of California in cooperation with the United States Department of Agriculture indicates that this area does not contain alkali in sufficient quantity to be injurious to crops.

Development - The population of the district is estimated to be 75. There are some twenty land holdings, the three largest of which, in the order of their size, are 5546, 2060 and 860 acres. Most of the holdings are occupied by their owners and most of the lands have been irrigated for more than twenty-five years. During the season of 1933, 11,680 acres were irrigated, consisting of 9696 acres of meadow hay, 307 of alfalfa, 429 of pasture and 1186 acres of grain. Alfalfa produces two cuttings and is reported to yield from two to two and one-half tons per acre. Meadow grass yields one crop of about two tons of hay, although some of the bottom lands in this district are said to produce an average of over three tons of hay per acre. The forage and grain crops are consumed locally in the livestock and dairying industries.

Purpose of organization - The purpose of organization was to obtain the cooperation of all of the land owners in the basin of the South Fork of the Pit River in securing a supplemental water supply

sufficient to provide for late season irrigation. It is proposed to accomplish this by building a reservoir in West Valley having sufficient capacity to supply the deficit in all but the driest years. The estimated cost of storage works is \$165,000. The lands are amply provided with canals, laterals and drainage, and it is not proposed by the district to make any expenditures for construction on these features. It is proposed to finance the construction of the West Valley reservoir through a loan from the Federal Public Works Administration.

Water Supply - While the average seasonal run-off from the South Fork of the Pit River is estimated at 50,000 acre-feet, there is rarely any water available for irrigation from this source after July 31. Climatic conditions are such that the irrigation season does not open until about April 1, and lack of water closes the season from June 1 to July 31, depending on the run-off for any particular season. Without stream regulation by storage the discharge which does occur is not evenly distributed throughout the four months when water is usually flowing, but is likely to be in excess of any practical use in the first part of the period, and much short of requirements in the latter part. The average run-off which is available to the district during the four months period is estimated at 35,000 acre-feet, but only about 18,000 acre-feet of this can be used without storage regulation. The district requires an annual supply of about 35,000 acre-feet made available in such amounts and at such times as it is needed over a period of about five months, and it is estimated that the proposed storage in West Valley will make this amount available except in the driest years.

Water Rights - Nearly all of the land in the district is riparian to the South Fork of the Pit River. Through cooperation with the State Division of Water Resources, the water rights of all of the lands in the district are in process of adjudication. There are said to be no advance claims below the district, and it is thought that no water right complications will arise from any efforts the district may make to provide storage in West Valley.

#### BIG VALLEY IRRIGATION DISTRICT

Location: In Big Valley along Pit River from Lookout, Modoc County, to south of Bieber, Lassen County. (See Map, page 21).

Date of organization election: October 12, 1925.

Gross area: 12,430 acres.

Post office: Bieber.

Railroad transportation: Western and Northern Pacific railroads.

History - The district was formed after two previous efforts to organize had failed. The first petition was filed with the supervisors of Lassen county in April, 1919, and was defeated in an election of November in the same year. The second petition was presented to the supervisors September 4, 1923, but, upon an adverse report by the State Engineer, the project was abandoned. The third petition which resulted in the formation of the present district was filed with the supervisors on February 4, 1925. The plan as then proposed was to store water in Jess Valley near Likely in cooperation with other interests, such interests to share in the costs to the extent of one-half. Negotiations failed and the district remained inactive until 1933. The present plan

contemplates the storage of 15,000 acre-feet of water at Allen Camp about 12 miles above Lookout on the Pit River. The Allen Camp site was suggested as feasible through the investigations of the Division of Water Resources in cooperation with the supervisors of Lassen and Modoc counties.

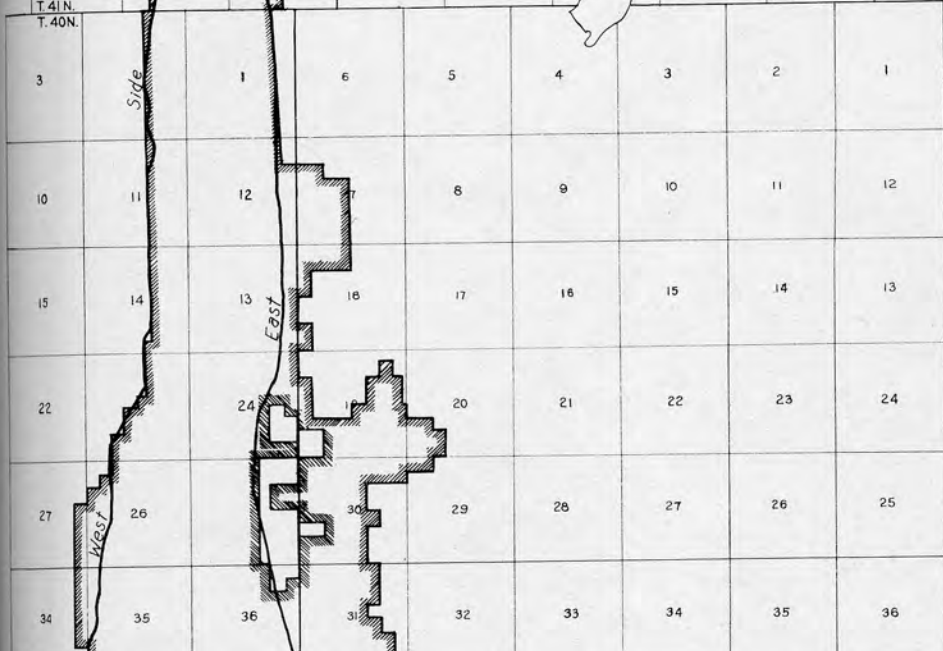
Soils and Topography - The Big Valley area lies in the northwestern part of Lassen county and southwestern part of Modoc county, is irregular in outline, with maximum length north and south of 23 miles and width of about 20 miles. Pit river traverses the valley from north to south. The Big Valley irrigation district lies along the Pit River in the central portion of the valley floor, and is located mostly in Lassen county. The district has an elevation of about 4000 feet, is irregular in shape and smooth in contour. A great deal of care was exercised in selecting for inclusion in the district only such lands as were free from alkali and had been tested for crops.

Development - The population of the district, exclusive of that of the towns which are within the exterior boundaries but are not included in the district is estimated to be 76. Including towns it is about 2000. In 1929 there were 39 land holdings, the largest of which was 1560 acres. There were four holdings of more than 640 acres, and the average sized holding for the district was about 320 acres. Big Valley, of which the irrigation district is a part, was settled about 1871. Livestock and dairying have been and are the prevailing industries. Sixty to seventy per cent of the land is now irrigated to the extent that the diminished water supply caused by increasing up-river diversions will permit. The new development now proposed is to con-

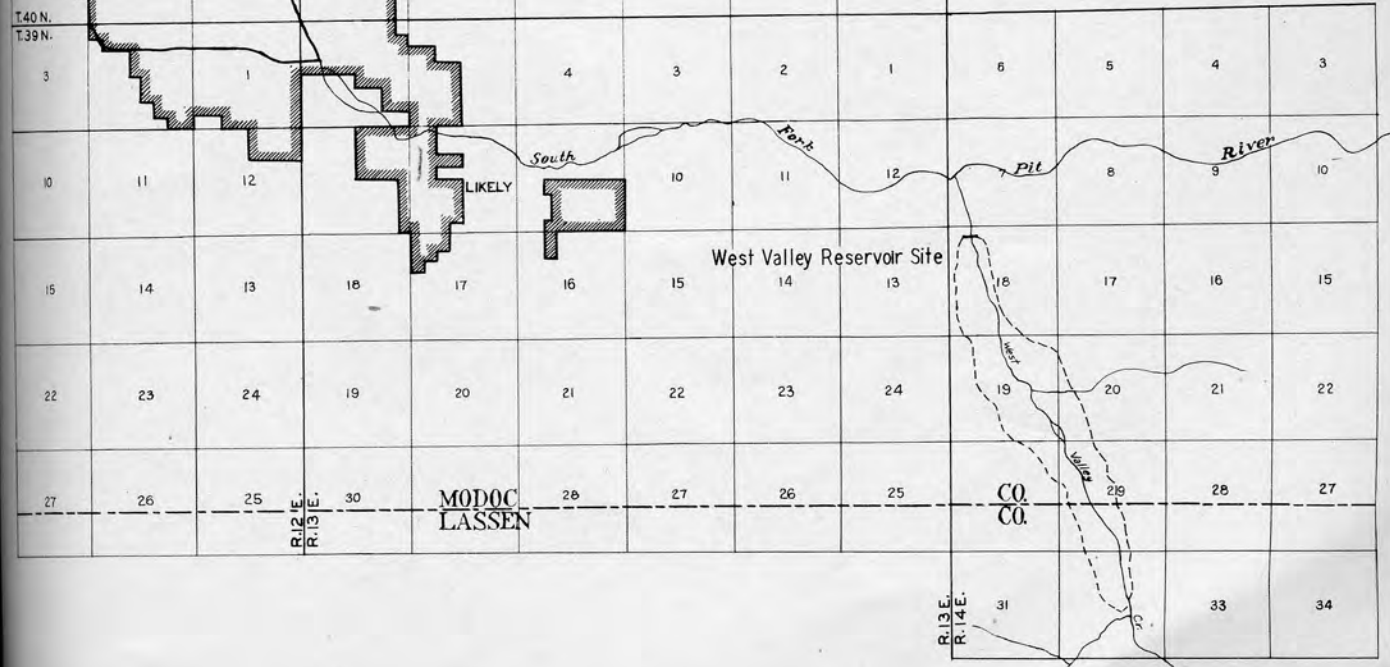
struct a storage reservoir of sufficient capacity to furnish a water supply adequate for the maturing of the forage and other crops necessary to make the lands profitable. An application for a loan of \$206,400 has been filed with the Federal Public Works Administration for funds with which to finance the proposed storage project.

Water Supply - Between April 1st and the time of haying, about four irrigations are ordinarily required to mature the meadow grass hay crops grown in the district, and the hay and pasture lands must have later water if late summer and fall pasturage is obtained. There are practically no years in which the water supply is now adequate for later season use nor but few years when it is sufficient for obtaining the best results in hay production. However, with storage supplied from surplus run-off in the early season, a supply can be made available.

Water Rights - Much of the land in the district is riparian to Pit River. Through cooperation of the State Division of Water Resources, the existing rights of all of the lands in Big Valley, including those in the district, are in process of adjudication as between the owners. The irrigation district has recently filed an application with the Division of Water Resources for storage at Allen Camp on the Pit River.



**SOUTH FORK  
IRRIGATION DISTRICT**  
MODOC COUNTY  
CALIFORNIA



T 40N.  
T 39N.

R 6E  
R 7E

R 7E  
R 8E



Roberts Res.

RIVER

LOOKOUT

MODOC  
LASSEN

CO.  
CO.

T 39 N.  
T 38 N.

R 6E  
R 7E

R 7E  
R 8E

T 38 N.  
T 37 N.

NUBIEBER

BIEBER

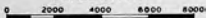
PIT

Highway

ALTURAS

# BIG VALLEY IRRIGATION DISTRICT MODOC AND LASSEN COUNTIES CALIFORNIA

SCALE IN FEET



## CHAPTER III

### STATISTICAL INFORMATION

Following this chapter is a group of tables summarizing information of the operations of California irrigation districts for the year 1933, and the status of the bond issues of such districts as of January 1, 1934. A brief discussion of the contents of these tables and a summary of financial activities of irrigation districts in 1933 follows:

#### Source of Supply, Storage and Distribution of Water

In Table I are shown the sources of water supply for the districts, capacities of reservoirs, water stored for the season of 1933, water diverted by gravity and by district pumps and the distribution of water diverted; number of wells installed and equipped and number of horsepower installed for pumping by districts; also approximate number of private irrigation wells in districts. There are 24 major reservoirs in use with a total capacity of 1,525,000 acre-feet. Water stored amounted to 737,000 acre-feet or less than one-half of the total capacity of the reservoirs, whereas in 1932 storage was two-thirds of such capacity. Diversions reported are 5,907,037 acre-feet by gravity, 633,882 acre-feet pumped from streams and 331,702 acre-feet pumped from wells. The total is 6,872,621 acre-feet, a decrease of 549,651 acre-feet from that reported diverted in 1932. The districts operated 302 irrigation wells and 251 drainage wells, and for all pumping operations reported an installation of 38,549 horsepower. To supplement the water



supply furnished by the districts, land owners were reported as operating 11,647 private irrigation wells, for which no information is available as to the quantity of water diverted, but the amount so diverted was considerably more than for the previous year, due to a material decrease in the quantity of water available for diversion from streams by the districts.

#### Irrigation District Crop Summary

Table II is a summary of the gross and irrigable areas of 83 districts, and shows the irrigated and cropped acreage reported for 1933. The table also shows the number of individual holdings in each district and the area held under tax deeds by the district on January 1, 1934. The 83 districts contain 3,200,088 acres, of which 2,785,510 are irrigable. The total number of holdings is 87,929, of which it is estimated 55,000 are farm holdings with an estimated population of 220,000. The area held by districts under tax deed increased from 181,622 acres on January 1, 1933 to 191,178 acres on January 1, 1934. The percentage of the total area of the districts held under tax deeds on January 1, 1934, was 6%. Of the farm land in the 83 districts, 1,679,676 acres were cropped, and of the cropped land 1,521,873 acres were irrigated. Fifty-two per cent of the irrigable area was irrigated. There was a decrease of 197,416 acres in the area irrigated as compared to that reported in 1932.

#### Assessments, Water Tolls and Other Revenues

Table III sets up the principal sources and amount of income of 84 California irrigation districts. The table indicates that the

total assessment levies of these districts for the calendar year 1933, computed as one-half of the sum of the levies for 1933 and 1934, was \$5,637,986, an amount \$2,644,000 less than the levy of the previous calendar year. The levy for the assessment year 1930-31 was \$10,286,582; for 1931-32, \$9,794,594; for 1932-33, \$6,769,127. In spite of this heavy reduction in assessments, delinquencies continued to increase, showing an average of 23% in 1931, 34% in 1932 and 50% in 1933. In the table is shown the amount of tax certificates sold to districts in 1933, amounting to a total of \$3,681,896. The collections from assessments, water sales and other sources, as reported in the last two columns of the table amounted to a total of \$8,668,216.

#### Bonds and Warrants

Table IV sets forth the status as of January 1, 1934 of all bonds of districts operating under the California irrigation district act, which had bonds outstanding on July 1, 1933; showing the amount voted, cancelled, sold, refunded, paid and outstanding, as well as the amount of bond principal and interest in default. In addition, the last column shows the amount of interest-bearing warrants outstanding. Some districts shown to be heavily in default on their bond obligations are not fairly represented, due to the fact that matured bonds and/or interest coupons remain unpaid pending the going into full effect of refunding plans adopted by the districts under agreements with bondholders' committees.

SUMMARY OF BOND DATA

Following is a summary of bond information as of January 1, 1934, of all irrigation districts which had bonds outstanding on July 1, 1933:

Total Issues Voted

Original .....	\$108,302,376
Refunding .....	26,566,211

Disposition of Bonds

Original Issues:

Sold .....	\$102,878,421
Unsold .....	3,367,229
Cancelled .....	2,056,726

Refunding Issues:

Exchanged or Sold .....	\$18,337,150
Not Exchanged or Sold .....	8,229,061

Present Status of Bonds

Outstanding, not due .....	\$91,395,670
Outstanding, in default .....	2,065,542
Paid .....	8,904,209
Cancelled by Bondholders .....	545,000
Interest coupons in default .....	6,342,149

Number of districts having bonds outstanding	72
Number of districts in default .....	48

The Riverdale Irrigation District paid the final maturity of its only bond issue, \$123,000, on July 1, 1933.

Bonds Voted in 1933

Bonds were voted by the following irrigation districts:

Original issues:

East Contra Costa .....	\$78,000
West Stanislaus .....	250,000

Refunding issues:

Byron-Bethany .....	\$569,000
East Contra Costa .....	1,150,000
Imperial .....	14,315,000
Merced .....	16,190,000
Vandalia .....	172,200
West Stanislaus .....	1,160,000

Approved for Certification

The Districts Securities Commission approved for certification the following irrigation district refunding bonds:

Grenada .....	\$138,000
Terra Bella .....	409,000
Vandalia .....	172,200
West Stanislaus .....	1,160,000

Year Formed, Area and Outstanding Bonds per Acre

In Table V are listed ninety-two irrigation districts. Seventy-two of these districts have bonds outstanding, the total amounts and per acre obligations of which are shown for each district. These figures as applied to the acres in the districts are a general average only, and they are not therefore necessarily a measure of the bond principal and interest payments required for any particular acre or parcel of land, as this requirement varies with the assessed valuation, which in most districts is not the same for all of the included lands. The total area included in the ninety-two districts is 3,384,079 acres. Of this total, 852,000 acres are included in the twenty districts which have no bonded indebtedness.

---

---

TABLE OF STATISTICAL DATA

---

---

TABLE 1

DATA RELATING TO SOURCE OF SUPPLY, STORAGE AND DISTRIBUTION OF WATER FOR CALIFORNIA IRRIGATION DISTRICTS

Name of District	Source of Water Supply	Wells				District		Reservoirs		Acre-feet Reported Diverted by Districts, 1933			Distribution of Water Diverted by Districts			
		District			Pri- vate	In- stalled Horse Power	Aver- age Pump Lift Feet	Capacity Acre-feet	Stored for Season Acre-feet	By Pump	By Gravity	Total	Inside District			Outside District Acre-feet
		Irriga- tion	Drain- age	Total									Irriga- tion Acre-feet	Domestic Acre-feet	Total Acre-feet	
Alpaugh	Wells	21		21		603	70			14,222		14,222	4,496		4,496	9,726
Alta	Kings River				2,100											
Anderson-Cottonwood	Sacramento River					15	12			400		123,231	123,231		123,231	
Banta-Carbena	San Joaquin River					4,350	110					133,400	133,400		133,400	400
Bard	Colorado River (part of Yuma project)									36,973		36,973	33,417		33,417	3,558
												13,185	13,185		13,185	
Baxter Creek	Eagle Lake							200,000								
Beaumont	Creeks and Wells	10		10	1	420	184		4	2,300	254	2,554	2,330	224	2,554	
Big Springs	Big Springs					325	81			7,000		7,000	7,000		7,000	
Browns Valley	North Fork Yuba River											19,000	17,000	2,000	19,000	
Butte Valley	Butte & Antelope Creeks and Wells	6		6	1	115	35	14,000	500	1,600	1,000	2,600	2,600		2,600	
Byron-Bethany	Old River (San Joaquin River)					1,105	70					7,257	7,257		7,257	
Camp Far West	Bear River							5,000	5,000			5,000	5,000		5,000	
Carmichael	American River					450	170			2,700		2,700	2,700		2,700	
Carpenter	Santiago Creek and Wells				2			2,500	260			2,242	2,242		2,242	
Citrus Heights	American River, North Fork Ditch Company											4,000	4,000		4,000	
Compton-Delevan	Sacramento River (from Glenn-Colusa I.D.)												22,829		22,829	
Consolidated	Kings River				3,600							171,000	168,000		168,000	3,000
Corcoran	Kings River, Peoples Ditch and Wells	25		25	215		77			17,671		15,030	26,323		26,323	6,378
Cordua	Yuba River											10,600	7,570		7,570	3,030
Deer Creek	Deer Creek											3,000	3,000		3,000	
East Contra Costa	Old River (San Joaquin River)		3	3	2	2,800	87					26,099	26,099		26,099	40
El Camino	Wells	30		30		880	64					4,527	4,527		4,527	
El Dorado	So. Fk. American River and Webber Creek				2			1,275	1,275			12,659	9,400	3,168	12,568	91
El Nido	Merced Irrigation District and Wells	1		1	70	15	45			621		6,683	7,304		7,304	
Empire West Side	Kings River and Wells				6											
Fairoaks	North Fork Ditch Company											6,080	5,880	200	6,080	
Fresno	Kings River and Wells	7		7	2,400	210	40			5,000	426,246	431,246	430,046		430,046	1,200
Glenn-Colusa	Sacramento River					3,200	7			468,434		468,434	338,071		338,071	130,363
Grenada	Shasta River				600	63				3,604		3,604	3,604		3,604	
Hot Spring Valley	Pit River and Big Sage Reservoir							76,000	7,000			10,000	8,000	1,000	9,000	1,000
Imperial	Colorado River											2,746,553	1,865,525	9,000	1,874,525	402,441
Island No. 3	Kings River (and purchased)				175								3,000		3,000	
Jacinto	Sacramento River					300	7					16,472	11,600		11,600	155
James	Kings, San Joaquin Rivers and Wells	53		53		1,000	44			26,079	8,878	34,957	33,857		33,857	1,100
La Canada	Canyons and Wells	2		2	1	390	800	10		225	175	400			400	
Laguna	Kings River				320							43,337	43,337		43,337	
Lakeland	Kings and Tule Rivers (and purchased)				3							10,227	16,605		16,605	
Lakeside	Wells	1		1		40	140			56		56		23	23	33
La Mesa, L.G. & S. V.	San Diego River, Boulder Cr. and Wells	12		12		700	350	18,033	5,370			4,809			4,809	
Linden	Wells				200											
Lindsay-Strathmore	Wachumne River and Wells	39		39	125	3,985	288	1,400	20	9,546	4,000	13,546	13,395	151	13,546	
Little Rock Creek	Little Rock Creek				5			3,000				3,500	3,500		3,500	
Madera					1,700											
Maxwell	Sacramento River (from Glenn Colusa I.D.)												4,673		4,673	
Merced	Merced River and Wells		80	80	290	1,800	32	289,000	223,600	78,670	425,000	503,670	489,070		489,070	14,600

TABLE 1

DATA RELATING TO SOURCE OF SUPPLY, STORAGE AND DISTRIBUTION OF WATER FOR CALIFORNIA IRRIGATION DISTRICTS (Continued)

Name of District	Source of Water Supply	Wells			District		Reservoirs		Acre-feet Reported Diverted by Districts, 1933			Distribution of Water Diverted by Districts				
		District			Pri- vate	In- stalled Horse Power	Aver- age Pump Lift Feet	Capacity Acre-feet	Stored for Season Acre-feet	By Pump	By Gravity	Total	Inside District			Outside District Acre-feet
		Irri- gation	Drain- age	Total									Irri- gation Acre-feet	Domestic Acre-feet	Total Acre-feet	
Modesto	Tuolumne River and Wells		63	63	130	985	31	119,466	35,245	48,136	304,522	352,658	352,658	352,658		
Montague	Shasta River							70,000	8,000		4,723	4,723	4,723	4,723		
Maglec-Burk	Old River (San Joaquin River)					275	15			8,100		8,100	8,100	8,100		
Nevada	Tuba River							85,000	5,000		45,075	45,075	32,108	1,540	33,648	11,427
Newport Heights	Wells	2		2		130	60			870		870		870		
Newport Mesa	Wells	1		1		75	165		5	600		600		600		
Oakdale	Stanislaus River							56,250	56,280		180,590	180,590	178,684		178,684	1,906
Oroville-Wyandotte	Feather River							6,300	6,300		20,514	20,514	11,714		11,714	8,800
Palmdale	Little Rock Creek and Wells	1		1		125	200			185	1,814	1,999	1,814	185	1,999	
Palo Verde	Colorado River										165,794	165,794	165,794		165,794	
Paradise	Little Butte Creek							3,120	2,810		3,517	3,517	3,517		3,517	
Potter Valley	Bel River (from P.G. & E. Company)										2,388	2,388	2,388		2,388	
Princeton-Codora-Glenn	Sacramento R. (and purchased from G.-C. L.D.)					1,100	24			1,000		1,000	36,044		36,044	20,515
Provident	Sacramento R. (and purchased from G.-C. L.D.)						20						30,418		30,418	
Ramona	Wells	13		13		33	165		1	200		200	100	100	200	
Richvale	Feather River										78,912	78,912	78,912		78,912	
Riverdale	Kings River				60						14,783	14,783	14,783		14,783	
San Dieguito	Lake Hodges Reservoir (water purchased)							37,500			1,949	1,949	1,764	185	1,949	
Santa Fe	Lake Hodges Reservoir (water purchased)					226	60			916	2,064	2,980	2,980		2,980	
San Ysidro	Wells	5		5		50	228		2	368		368		368		
Scott Valley	Scott River										10,000	10,000	10,000		10,000	
Serrano	Santiago Creek and Wells							2,500	650		2,362	2,362	2,362		2,362	
South Montebello	Wells	3		3		255	175			1,320		1,320		1,320		
South San Joaquin	Stanislaus River							87,000	87,000		238,500	238,500	237,000		237,000	1,500
Stinson	Kings River and Wells	23		23		690	56			13,000		13,000	13,000		13,000	
Table Mountain	Feather River				1	30	60	4,510	4,510		3,600	3,600	3,600		3,600	
Terra Bella	Wells	33		33	4	1,315	385			4,570		4,570	4,426	138	4,564	10
Thermalito	Feather River							3,680	3,680		5,066	5,066	5,066		5,066	
Tracy-Clover	Old River (San Joaquin River)					125	20			1,350		1,350	1,350		1,350	
Tranquillity	San Joaquin River				3	300	8			6,958	4,213	11,171	11,171		11,171	
Tulare	Kaweah River and Wells				11						3,118	3,118	3,118		3,118	
Furlock	Tuolumne River and Wells		103	103		2,060	45	230,000	230,000	90,000	480,265	570,265	480,265		480,265	
Vandalia	Tule River and Wells	11		11	21	350	250			1,816		1,816	1,778	38	1,816	
Vista	Lake Henshaw (water purchased)							205,000	54,400		6,424	6,424	5,986	438	6,424	
Walnut	San Gabriel River and Wells	3		3	2	150	50			1,800		1,800	1,800		1,800	
Waterford	Tuolumne River					15	15				31,155	31,155	31,155		31,155	
West Side	San Joaquin River		2	2		1,900	83			15,039		15,039	14,970		14,970	69
West Stanislaus	San Joaquin River					4,500	105			39,900		39,900	38,255		38,255	1,645
Woodbridge	Mokelumne River				7			800			86,600	86,600	86,600		86,600	
Totals		302	251	553	11,647	38,549		1,525,358	736,904	965,584	5,907,037	6,872,621	5,781,596	18,390	5,840,683	632,368
Buena Vista W. S. D.	Kern River				107			209,000	12,500		67,530	67,530	67,530		67,530	



TABLE II

## CALIFORNIA IRRIGATION DISTRICT CROP REPORT FOR 1933

Name of District	Gross Area, Acres	Irrigable Area, Acres	Area Held by Districts under Tax Deed, Acres	Estimated Number of Holdings			Kind and Acreage of Crops Reported										Area Cropped			
				Farm Land	Town Lots	Total	Alfalfa	Cotton	Rice	Grain and/or Grain Hay	Other Field and Truck	Vines	Deciduous Fruits, Nuts and Olives	Citrus	Avocados	Not Segregated	Dry Farmed Acres	Irrigated Acres	Total Acres Reported Cropped	
Alpaugh	8,133	8,132	2,476	223		223	450	1,600		300	200						270		2,820	2,820
Alta	129,300	110,000	None	3,400	2,900	6,300					48,550	8,800	930				21,720		80,000	80,000
Anderson-Cottonwood	32,000	28,064	2,528	360	390	750	3,532		3,000	1,754	189	1,663					2,021		12,159	12,159
Banta-Carbena	15,598	15,194	92	165		165	1,927		3,359	7,662	63	392					47		13,450	13,450
Bard	5,904	5,857	19	150		150	3,213	1,008		188	636						272		5,345	5,345
Beaumont	4,141	3,161	160	350	1,250	1,600							1,864						1,864	1,864
Big Springs	3,570	2,500	None	35		35	2,000		300									300	2,000	2,300
Browns Valley	40,000	11,740	None	151	18	169	230		700	200	200	1,233					4,800	1,200	6,163	7,363
Butte Valley	29,400	17,500	10,750	75	45	120											2,750	750	2,000	2,750
Byron-Bethany	17,200	12,544	None	180	30	210	6,852		500	468	100	200					2,030	2,000	8,150	10,150
Camp Far West	4,085	2,658	None	5		5	110		40	607	140	746					30		1,673	1,673
Carmichael	3,123	2,640	None	492		492					300	1,550					50		2,200	2,200
Carpenter	1,328	1,320	None	117	149	266					92			1,010			48		1,150	1,150
Citrus Heights	3,167	3,079	72	325		325	25				128	624	1,127	131			307	602	1,740	2,342
Compton-Delevan	12,652	11,500	2,780	9		9	80		2,700	2,500							6,000	6,000	5,280	11,280
Consolidated	149,047	145,757	None	4,400	216	4,616											98,000		98,000	98,000
Corcoran	51,606	51,000	640	280		280	3,444	12,217	9,902	581							14,519	14,519	26,144	40,663
Cordua	5,944	5,304	3,034	49		49			100	5	10						740	500	1,755	2,255
Deer Creek	2,186	2,000	None	17		17	200		650	140	10		435				280		1,715	1,715
East Contra Costa	20,200	19,760	None	360	120	480	1,362		490	2,342	967	6,735							11,896	11,896
El Camino	7,546	7,546	1,449	260		260	900		350	56			945				1,561	1,100	2,712	3,812
El Dorado	30,000	19,905	None	510	580	1,090							4,500						4,500	4,500
El Hido	9,330	7,405	None	100		100	2,260	128		767	474	51	32				189		3,901	3,901
Empire West Side	7,110	6,400	None	49		49	175		1,755								1,500	1,500	3,430	4,930
Fairoaks	3,900	3,400	12	291	155	446					75	1,830		750			1,097		3,752	3,752
Fallbrook	9,915	9,900	None	321	45	366								925	600				1,525	1,525
Fresno	241,300	239,080	None	9,255		9,255													163,000	163,000
Glenn-Colusa	123,500	119,021	17,530	455		455	13,474		22,141	17,734	3,646	347	1,145				52,973	8,375	102,685	111,060
Grenada	2,163	1,800	1,103	27	20	47	1,060										1,103	1,013	1,150	2,163
Hot Spring Valley	9,533	9,000		37		37	250		4,750								4,000	5,000	4,000	9,000
Imperial	612,200	521,600	16,000	4,665	6,286	10,951											343,000		343,000	343,000
Island No. 3	4,620	4,120	None	150		150											3,700		3,700	3,700
Jacinto	11,664	11,496	1,057	168		168	1,471		2,200	414		850					1,313	2,242	4,006	6,248
James	26,642	18,266	25,838	16		16	1,745	3,200	5,600	200	30						500		11,275	11,275
La Canada	1,322	1,259	None			559														
Laguna	34,858	30,000	648	800		800											25,000		25,000	25,000
Lakeland	23,283	23,000	1,516	24		24											8,000		8,000	8,000
Lakeside	320	288	None			90														
La Mesa, L. G. & S. V.	19,019	13,000		1,100	5,700	6,800					225	25	1,623	725					2,598	2,598
Linden	13,700	13,000	None	310	36	346	300			600	250	6,080					13	6,400	7,243	13,643
Lindsay-Strathmore	15,234	14,540	4,524	450		450						322	679	6,932			2,777	2,401	8,309	10,710
Little Rock Creek	3,073	2,877		119	6	125						1,200							1,200	1,200
Madera	173,000	170,000	None	2,000	2,132	4,132											45,000		45,000	45,000
Merced	190,000	167,000	10,634	2,800	2,148	4,948	14,357	4,333	5,253	25,808	14,383	9,534	18,229				40,376	43,963	88,315	132,278

TABLE II

## CALIFORNIA IRRIGATION DISTRICT CROP REPORT FOR 1933 (Continued)

Name of District	Gross Area, Acres	Irrigable Area, Acres	Area Held by Districts Under Tax Deed, Acres	Estimated Number of Holdings			Kind and Acreage of Crops Reported										Area Cropped		
				Farm Land	Town Lots	Total	Alfalfa	Cotton	Rice	Grain and/or Grain Hay	Other Field and Truck	Vines	Deciduous Fruits, Nuts and Olives	Citrus	Avocados	Not Segregated	Dry Farmed Acres	Irrigated Acres	Total Acres Reported Cropped
Modesto	81,203	78,778	None	2,500		2,500	19,302		1,141	14,442	7,641	9,289	9,694			11,613	8,074	65,048	73,122
Montague	26,117	18,531	4,730	100	230	330	650			3,000							1,850	1,800	3,650
Maglee-Burk	2,872	2,846	403	38		38	1,120			420	200	10				696		2,446	2,446
Nevada	266,000	164,000	2,222	1,865		1,865										8,929		8,929	8,929
Newport Heights	1,503	1,503	None	401	641	1,042	20			15	390	2	35	50	1	5		518	518
Newport Mesa	694	400	None		216	216					400					50	50	400	450
Oakdale	74,300	64,000	6,989	1,389	1,304	2,693	3,250	279	3,156	17,788	2,870	2,109	4,119			8,414	17,608	24,377	41,985
Oroville-Wyandotte	24,200	22,300		617	105	722					200	15	1,285	1,394	25	36		2,955	2,955
Palmdale	4,746	4,698	3,335	96	118	214	95						441					536	536
Palo Verde	88,693	70,000	37,000	500	167	667	8,807	9,061		1,499	1,512					238		21,117	21,117
Paradise	11,260	9,836	2,942	596	101	697					40	80	914			260		1,294	1,294
Potter Valley	5,042	4,195	None	105		105							800			1,700		2,500	2,500
Princeton-Codora-Glenn	13,656	12,290	4,000	142	38	180	745		1,700			221	1,265			6,644	5,920	4,660	10,580
Provident	22,805	21,000	8,200	10		10	50		2,400									2,450	2,450
Ramona	660	594	None		215	215										200		200	200
Richvale	17,170	14,600	None	100	133	233			8,175									8,175	8,175
Riverdale	15,830	14,800	39	168		168	500			1,000	1,000					946		3,446	3,446
San Dieguito	4,000	3,000	None	606	894	1,500				40	171		24	4	1,081	251		1,571	1,571
Santa Fe	10,106	6,980	None	320	440	760				30	220		160	1,700	520			2,630	2,630
San Ysidro	532	490	21			381													
Scott Valley	5,103	4,000	None	28		28	2,000			2,000							1,103	4,000	5,103
Serrano	1,498	1,319	None	140		140					10		5	1,235	60			1,310	1,310
South Montebello	827	827	None			320	75				140		10	225		210		660	660
South San Joaquin	71,112	66,465	1,100	1,915	947	2,862	20,243		10,212	4,715	9,679	3,880				18,476	11,913	55,298	67,211
Stinson	11,150	11,000	6,100	6	4	10	12	2,700		1,900								4,612	4,612
Table Mountain	1,955	1,780		19		19	60	300										360	360
Terra Bella	12,285	12,070	4,145	530	95	625				1,500	40		310	1,950		450	1,950	2,300	4,250
Thermalito	3,110	2,940	369	155	295	450	15				80	100	426	373		100		1,094	1,094
Tracy-Clover	1,084	1,034	83	74		74	142			160		5				592		899	899
Tranquillity	10,750	10,190	4,983	121	83	204	300	680		1,500	700					300		3,480	3,480
Tulare	34,000	30,600	None	545	43	588										3,118		3,118	3,118
Turlock	181,556	179,278		5,000	2,500	7,500	44,505	25	570	33,994	10,725	11,945	7,502			2,451		120,717	120,717
Vandalia	1,275	1,253	67	42		42					20					1,077		1,097	1,097
Vista	18,338	14,654	745			1,527	25				357	39	114	2,051	3,525	655		6,766	6,766
Walnut	911	911	None	70		70												900	900
Waterford	14,110	11,424	754	233	70	303	1,189			1,240	746	538	1,503			1,664	1,240	5,650	6,890
West Side	11,822	11,811	80	152	277	429	3,700			595	1,465	250	290			5,330	5,330	6,300	11,630
West Stanislaus	21,830	21,500	None	108	14	122	2,880	265		9,115	6,402		240			4,900	4,900	14,002	18,902
Woodbridge	14,167	14,000	None	155		155	2,318			805	2,745	2,369	784			1,396		10,417	10,417
Totals	3,200,088	2,785,510	191,178	53,896	31,156	87,929	171,430	35,496	48,983	195,748	77,824	98,197	94,061	23,578	6,537	765,610	157,803	1,521,873	1,679,676
Buena Vista Water S. D.	78,596	50,400	None	83	30	113	2,400	4,100		6,100	6,650					1,100		20,350	20,350

TABLE III

## SUMMARY OF ASSESSMENTS LEVIED, TAX CERTIFICATES SOLD AND REVENUES RECEIVED FROM ASSESSMENTS, WATER TOLLS AND OTHER SOURCES

Name of District	Assessed Valuation per Acre			Assessment, 1932-1933					Assessment, 1933-1934				Assessments and Water Tolls Collected, 1933	Collected from Sources Other than Assessments and Water Tolls, 1933
	High	Low	Usual or Average	Total Assessed Valuation	Rate per \$100 or Valuation	Total Assessment Levied	Tax Certificates Sold, Including Penalties	Total Assessed Valuation	Rate per \$100 Valuation			Total Assessment Levied		
									Bond Fund	General Fund	Total Rate			
Alpaugh -----	\$ 60	\$ 40	\$ 50	\$ 367,164	\$ 8.00	\$ 29,373	\$ 17,588	\$ 424,676	\$ 3.00	\$ ---	\$ 3.00	\$ 8,940	\$ 50,533	\$ 1,429
Alta -----	100	---	65	5,229,487	2.09	109,061	29,762	8,475,509	0.37	1.04	1.41	119,566	105,399	1,897
Anderson-Cottonwood -----	---	---	45	1,285,077	2.00	25,702	12,137	1,279,100	---	2.00	2.00	25,582	17,061	None
Banta-Carbona -----	150	25	150	2,216,742	3.90	86,453	68,065	2,146,566	1.55	0.75	2.30	49,371	95,816	895
Bard -----	---	---	100	585,712	---	None	None	585,712	---	0.20	0.20	1,171	947	2,054
Beaumont -----	---	---	91	385,990	10.00	38,599	15,999	385,730	8.00	2.00	10.00	38,573	52,137	3,044
Big Springs -----	---	---	200	492,838	1.18	5,791	4,275	492,838	---	0.31	0.31	1,533	5,833	None
Browns Valley -----	---	---	---	384,000	---	None	None	384,000	---	---	---	None	4,506	239
Butte Valley -----	40	---	40	734,158	6.50	40,562	4,494	750,570	---	---	3.13	24,863	2,258	2,227
Byron-Bethany -----	200	20	130	1,695,260	4.42	74,931	20,358	1,687,623	1.52	0.80	2.32	39,153	74,462	800
Camp Far West -----	150	5	85	349,625	3.89	14,934	None	349,625	3.06	0.54	3.60	12,600	12,048	None
Carmichael -----	---	---	80	249,811	12.78	31,957	12,227	249,682	---	---	9.38	23,307	24,203	79
Carpenter -----	800	---	800	1,214,012	1.10	13,354	1,196	963,143	1.40	---	1.40	13,500	28,030	5,809
Citrus Heights -----	100	100	100	307,970	10.50	32,337	12,133	307,970	---	6.00	6.00	18,478	19,019	5,442
Compton-Delevan -----	75	75	75	839,080	12.63	105,976	114,483	948,880	15.88	0.85	16.73	158,965	17,681	4,470
Consolidated -----	110	---	70	10,455,732	2.00	209,177	39,816	9,263,711	---	1.00	1.00	93,304	189,921	8,993
Corcoran -----	100	80	100	5,139,840	2.00	101,179	42,704	5,139,840	0.78	0.72	1.50	75,879	94,525	13,939
Cordua -----	50	25	50	330,234	10.89	35,962	38,553	218,876	---	2.69	2.69	5,888	7,315	7,438
Deer Creek -----	100	---	100	177,052	1.95	3,452	1,675	177,052	1.95	---	1.95	3,453	1,896	80
East Contra Costa -----	190	100	175	3,598,792	3.90	141,652	30,907	3,529,370	1.55	0.95	2.50	88,104	162,613	1,172
El Camino -----	---	---	75	565,728	4.50	25,458	30,769	490,878	---	---	---	None	10,493	676
El Dorado -----	155	2	47	2,031,825	1.00	20,318	8,634	1,956,912	---	0.65	0.65	12,709	52,451	27,298
El Nido -----	80	10	65	541,375	2.40	12,993	8,110	541,375	1.44	0.96	2.40	12,993	9,262	None
Empire West Side -----	100	100	100	646,041	1.90	12,275	3,263	646,041	---	1.00	1.00	6,460	7,719	None
Fairoaks -----	96	45	90	342,655	7.00	23,986	16,716	343,425	1.75	5.75	7.50	27,901	26,949	954
Fallbrook -----	---	---	100	992,704	0.20	1,986	451	990,183	---	1.00	1.00	9,901	4,630	177
Fresno -----	100	---	58	18,281,420	0.90	164,542	28,287	17,701,315	---	0.90	0.90	159,307	160,409	36,338
Glenn-Colusa -----	44	25	40	4,466,561	*5.50	249,189	179,957	4,235,799	*5.00	---	*5.00	239,518	201,890	19,028
Grenada -----	200	125	200	370,870	5.50	20,398	None	378,530	1.08	---	1.08	4,088	8,629	None
Hot Spring Valley -----	30	5	20	181,735	11.00	19,990	18,326	181,735	10.00	1.00	11.00	19,990	295	100
Imperial -----	150	100	125	49,406,738	1.50	471,048	337,832	48,556,619	0.77	0.88	1.65	741,048	1,285,500	59,599
Island No. 3 -----	---	---	---	208,000	---	None	None	208,000	---	---	---	---	---	None
Jacinto -----	---	---	60	676,874	3.30	22,337	14,429	632,460	---	---	1.80	13,500	10,509	946
James -----	150	25	150	3,619,695	3.03	109,568	118,214	3,619,928	2.56	0.43	2.99	108,220	46,628	8,307
La Canada -----	---	---	175	1,288,920	1.75	22,557	4,957	1,279,715	1.33	0.22	1.60	20,477	36,813	2,362
Laguna -----	---	---	45	1,318,004	---	None	None	1,310,236	---	1.10	1.10	14,412	11,721	1,074
Lakeland -----	---	---	---	---	---	None	None	2,328,000	---	---	---	None	871	674
Lakeside -----	---	---	---	133,250	4.25	5,663	2,216	133,052	---	---	3.50	4,657	6,320	2,434
La Mesa, L. G. and S. V. -----	---	---	242	5,938,489	2.60	155,947	107,691	5,904,812	---	1.90	1.90	112,383	201,289	14,054
Linden -----	---	---	100	1,351,875	---	None	None	1,351,875	---	---	---	None	---	---
Lindsay-Strathmore -----	175	---	165	1,825,816	16.04	292,861	145,450	1,770,332	---	---	4.26	75,415	245,445	9,257
Little Rock Creek -----	---	---	73	277,082	9.50	22,375	22,000	218,718	---	---	9.50	29,194	3,306	100
Madera -----	125	5	40-60	9,209,020	0.18	16,576	8,796	9,089,630	---	0.12	0.12	10,893	14,107	601
Merced -----	120	5	75	12,873,880	8.90	1,148,483	779,899	12,292,400	---	1.00	1.00	122,924	354,398	336,396

\*For Williams District lands \$6.00.

TABLE III

SUMMARY OF ASSESSMENTS LEVIED, TAX CERTIFICATES SOLD AND REVENUES RECEIVED FROM ASSESSMENTS, WATER TOLLS AND OTHER SOURCES (Continued)

Name of District	Assessed Valuation per Acre			Assessment, 1932-1933					Assessment, 1933-1934				Assessments and Water Tolls Collected, 1933	Collected from Sources Other than Assessments and Water Tolls, 1933
	High	Low	Usual or Average	Total Assessed Valuation	Rate per \$100 or Valuation	Total Assessment Levied	Tax Certificates Sold, Including Penalties	Total Assessed Valuation	Rate per \$100 Valuation			Total Assessment Levied		
									Bond Fund	General Fund	Total Rate			
Modesto -----	\$ 150	\$ 10	\$ 70-80	\$ 7,330,930	\$ 3.10	\$ 230,356	\$ 24,605	\$ 7,418,690	\$ 2.00	\$ 1.00	\$ 3.00	\$ 222,561	\$ 250,910	\$ 607,213
Montague -----	75	---	---	864,537	11.70	101,152	101,152	718,253	---	0.33	0.33	2,432	1,147	225
Naglee-Burk -----	100	60	100	244,278	10.00	24,427	10,100	244,278	---	5.50	5.50	13,435	14,869	1,450
Nevada -----	45	6	15	3,687,094	1.00	38,121	11,767	3,632,941	---	1.00	1.00	36,329	80,523	395,402
Newport Heights -----	1,000	675	800	1,334,755	1.35	18,019	5,729	1,207,620	---	---	1.35	16,303	22,045	1,218
Newport Mesa -----	800	---	600	422,405	1.35	5,703	2,465	422,405	0.83	1.02	1.85	7,815	6,062	2,292
Oakdale -----	---	---	53	3,946,020	5.10	201,246	81,958	3,912,390	2.20	2.40	4.60	179,970	135,927	82,155
Oroville-Wyandotte -----	100	10	100	2,309,000	2.10	50,046	41,435	2,305,651	---	1.00	1.00	18,567	47,778	631
Palmdale -----	---	---	100	143,648	5.00	7,182	3,760	139,621	2.75	2.25	5.00	6,982	7,595	293
Palo Verde -----	100	---	50	2,817,200	13.77	377,168	393,787	2,817,200	---	---	---	None	65,466	8,240
Paradise -----	60	2	60	536,012	7.50	34,170	22,404	430,028	---	---	3.75	4,416	25,718	2,663
Potter Valley -----	60	5	60	259,262	4.95	12,833	1,139	258,663	3.50	1.45	4.95	12,803	16,933	157
Princeton-Codora-Glenn -----	70	65	67	919,074	3.80	33,412	17,060	866,028	1.20	2.50	3.70	30,872	48,761	3,525
Provident -----	80	60	75	1,611,500	6.50	104,748	72,237	1,611,500	5.70	---	5.70	91,856	22,571	13,048
Ramona -----	200	50	---	81,000	7.50	6,075	1,093	81,185	8.00	---	8.00	6,495	10,345	720
Richvale -----	30	20	30	508,550	3.34	16,985	10,927	505,880	---	---	---	None	51,432	2,575
Riverdale -----	---	---	50	1,114,480	2.33	26,227	8,129	703,563	---	---	1.50	10,553	22,796	None
San Diegoito -----	2,000	150	515	2,010,877	4.00	80,435	29,548	2,006,179	---	---	4.00	80,247	88,274	4,878
Santa Fe -----	900	---	186	2,041,020	6.46	131,850	62,752	1,866,350	1.13	3.07	4.20	78,387	110,560	11,080
San Ysidro -----	500	20	250	122,720	3.00	3,682	1,021	123,085	2.00	1.00	3.00	3,693	12,546	502
Scott Valley -----	---	---	50	256,000	4.00	10,240	None	255,150	---	---	4.00	10,206	10,201	None
Serrano -----	---	10	1,000	1,318,513	1.00	13,185	651	1,318,540	1.00	---	1.00	13,185	24,564	5,593
South Montebello -----	850	800	850	705,845	1.65	11,646	613	705,640	---	---	1.55	10,937	21,155	None
South San Joaquin -----	135	20	100	6,629,370	6.00	446,056	133,990	6,608,420	1.75	3.25	5.00	330,421	238,933	68,038
Stinson -----	---	---	50	232,532	5.00	11,627	8,766	156,853	1.25	3.75	5.00	7,843	62,241	11,654
Stratford -----	---	---	100	1,037,330	---	None	None	1,037,330	---	0.15	0.15	1,556	None	None
Table Mountain -----	---	---	125	240,675	5.30	13,542	14,206	240,675	4.80	0.50	5.30	13,542	2,259	2,928
Terra Bella -----	130	50	100	941,026	5.00	47,051	36,972	728,769	1.40	5.60	7.00	51,014	67,157	4,238
Thermalito -----	---	---	150	449,342	7.80	36,588	16,611	450,166	---	2.00	2.00	9,503	14,406	5,568
Tracy-Clover -----	100	---	100	95,071	9.00	8,556	4,519	95,071	---	5.50	5.50	5,229	5,617	188
Tranquility -----	150	---	150	991,849	2.30	22,813	23,577	991,849	---	---	---	None	11,273	1,427
Tulare -----	---	---	40	1,642,580	0.50	8,213	2,656	1,247,675	---	0.80	0.80	8,500	11,559	1,168
Turlock -----	125	20	80	13,462,145	3.00	403,880	93,257	13,366,680	3.00	---	3.00	400,920	362,210	775,049
Vandalia -----	200	200	200	241,614	10.00	24,161	2,104	241,614	2.42	2.58	5.00	12,081	33,566	329
Vista -----	300	10	126	2,309,374	4.80	90,850	47,429	2,255,908	2.22	3.28	5.50	124,075	182,995	49,836
Walnut -----	---	---	1,000	910,950	0.50	4,555	795	910,750	---	0.50	0.50	4,554	8,255	None
Waterford -----	200	5	74	1,093,679	4.50	49,215	31,022	1,075,003	1.00	3.00	4.00	43,000	25,056	526
West Side -----	150	---	100	1,223,178	5.50	67,274	35,277	1,213,400	---	1.75	1.75	21,229	51,191	1,872
West Stanislaus -----	---	---	100	2,190,520	4.00	87,620	20,191	2,182,805	1.40	0.60	2.00	43,156	127,586	263
Woodbridge -----	150	20	100	1,209,975	2.00	24,095	3,823	1,203,169	2.00	---	2.00	23,959	52,406	154
Totals -----				316,835,338		6,802,006	3,681,896	223,981,711				4,506,846	6,020,736	2,647,480

TABLE IV  
SUMMARY OF STATISTICAL DATA RELATING TO OUTSTANDING BONDS AND WARRANTS OF CALIFORNIA IRRIGATION DISTRICTS  
JANUARY 1, 1934  
(Totals for each district underscored)

Name of District	Number of Bond Issues	Date of Bonds	Range of Maturities	Reg-ular Coupon Rate, per cent	Status of Bond Issues January 1, 1934										Interest Bearing Warrants Outstanding 1/1/34	
					Face Value of Bonds Voted		Disposition of Bonds Voted			Disposition of Bonds Sold			Bond Payments Due and Not Paid			
					Original	Refunding	Original Issues Canceled	Sold	Unsold, all Issues	Refunded	Paid	Out-standing	Principal	Interest		
Alpaugh	1	Jul. 1, 1916	Jul. 1, 1927-1946	6	\$ 283,000		None	\$ 283,000	None	None	None	\$ 62,260	\$ 220,740	None	\$ 16,118	None
Alta	1 Ref.	Feb. 4, 1902	Jan. 1, 1923-1942	5		500,000	None	543,000	140,000	492,000	385,500	157,500	None	None	None	None
Anderson-Cottonwood					1,255,000		None	1,255,000	None	None	114,000	1,141,000	44,000	80,790	None	None
	1	Jan. 1, 1916	Jan. 1, 1937-1956	6	480,000											
	2	Jul. 1, 1917	Jul. 1, 1938-1957	6	575,000											
	3	Jul. 1, 1920	Jul. 1, 1925-1934	6	200,000											
Banta-Carbona					1,164,000		None	1,137,060	26,940	None	None	1,137,060	None	130,229	56,896	None
	1	Aug. 1, 1924	Jul. 1, 1940-1964	6	705,000											
	2	Dec. 1, 1925	Jul. 1, 1941-1965	6	125,000											
	3	Jan. 1, 1927	Jan. 1, 1948-1967	6	334,000											
Baxter Creek	1	Jul. 1, 1921	Jan. 1, 1926-1943	6	511,000		None	511,000	None	None	None	511,000	167,000	265,021	51,760	None
Beaumont					300,000		None	300,000	None	None	82,900	217,100	None	None	1,872	None
	1	Nov. 1, 1920	Jan. 1, 1926-1944	6	230,000											
	2	Jul. 1, 1926	Jul. 1, 1931-1950	6	70,000											
Big Springs	1	Jul. 1, 1928	Jan. 1, 1930-1946	6	69,000		None	67,000	2,000	None	8,000	59,000	11,000	3,360	None	None
Butte Valley	1	Sep. 1, 1923	Jan. 1, 1944-1963	6	594,000		None	594,000	None	None	None	594,000	None	246,480	None	None
Byron-Bethany					650,000		None	650,000	None	None	81,000	569,000	14,000	None	6,000	None
	1	Nov. 1, 1920	Jan. 1, 1924-1952	6	550,000											
	2	Sep. 1, 1923	Jul. 1, 1933-1955	6	100,000											
Camp Far West	1	Jul. 1, 1927	Jul. 1, 1937-1956	6	200,000		None	179,000	21,000	None	None	179,000	None	None	None	None
Carmichael					120,000		None	120,000	None	None	35,900	84,100	5,000	1,938	None	None
	1	Jul. 1, 1916	Jul. 1, 1923-1942	6	90,000											
	2	Jan. 1, 1926	Jan. 1, 1933-1945	6	30,000											
Carpenter	1	Jul. 1, 1929	Jul. 1, 1934-1953	6	200,000		None	200,000	None	None	None	200,000	None	None	None	None
Citrus Heights	1	Aug. 1, 1921	Jul. 1, 1926-1945	6	262,000		None	215,000	47,000	None	61,000	154,000	2,000	5,250	None	None
Compton-Delevan	1	Dec. 1, 1921	Jan. 1, 1922-1936	6	575,000		52,000	523,000	103,000	281,000	139,000	384,000	59,000	57,660	None	None
	1 Ref.	Jan. 1, 1927	Jan. 1, 1937-1950	6		384,000										
Corcoran	1	Jan. 1, 1920	Jan. 1, 1931-1955	6	760,000		None	760,000	None	None	27,000	733,000	13,000	39,810	22,925	None
Cordua					267,000		None	258,000	94,000	102,000	1,183	256,817	49,817	33,960	None	None
	1	Jun. 1, 1920	Jul. 1, 1925-1940	6	192,000											
	2	Jun. 1, 1921	Jul. 1, 1925-1940	6	75,000											
	1 Ref.	Jun. 1, 1925	Jul. 1, 1941-1951	6		187,000										
Deer Creek	1	Sep. 1, 1927	Jul. 1, 1929-1938	6	25,000		None	25,000	None	None	10,000	15,000	2,500	785	None	None
East Contra Costa					1,324,000		23,000	1,301,000	None	None	148,000	1,153,000	None	None	None	None
Brentwood	1	Jan. 1, 1924	Jan. 1, 1935-1954	6	514,000											
Knightsen	1	Jul. 1, 1921	Jul. 1, 1927-1946	6	650,000											
Lone Tree	1	Mar. 1, 1922	Jan. 1, 1928-1947	6	160,000											

TABLE IV (Continued)

SUMMARY OF STATISTICAL DATA RELATING TO OUTSTANDING BONDS AND WARRANTS OF CALIFORNIA IRRIGATION DISTRICTS  
JANUARY 1, 1934  
(Totals for each district underscored)

Name of District	Number of Bond Issues	Date of Bonds	Range of Maturities	Reg-ular Coupon Rate, per cent	Status of Bond Issues January 1, 1934										Interest Bearing Warrants Outstanding 1/1/34
					Face Value of Bonds Voted		Disposition of Bonds Voted			Disposition of Bonds Sold			Bond Payments Due and Not Paid		
					Original	Refunding	Original Issues		Unsold, all Issues	Refunded	Paid	Out-standing	Principal	Interest	
		Canceled	Sold												
El Camino	1	Nov. 1, 1926			\$ 430,000		None	\$ 423,000	\$ 7,000	None	None	\$ 423,000	None	\$ 73,560	\$ 3,166
	1st Div.		Jan. 1, 1937-1956	6	275,000										
	2nd Div.		Jan. 1, 1940-1952	6	28,000										
	3rd Div.		Jan. 1, 1940-1956	6	127,000										
El Dorado	1	Mar. 1, 1927	Jan. 1, 1948-1967	6	1,300,000		None	688,000	612,000	None	None	688,000	None	4,320	24,612
El Nido	1	Jan. 1, 1931	Jan. 1, 1934-1951	6	135,000		None	120,000	15,000	None	None	120,000	None	None	None
Fairoaks	1	Oct. 1, 1918	Jul. 1, 1924-1943	6	200,000		None	160,000	40,000	None	72,000	88,000	None	None	None
Glenn-Colusa	1	Oct. 1, 1920	Jan. 1, 1922-1941	6	2,587,000		182,850	2,404,150	15,000	285,000	1,009,000	1,395,150	205,700	94,732	None
	1 Ref.	Nov. 1, 1924	Jan. 1, 1935-1941	6		300,000									
Grenada	1	Jul. 1, 1921	Jul. 1, 1926-1940	6	240,000		104,000	240,000	None	136,000	None	136,000	None		541
	1 Ref.	Jun. 16, 1931	Jul. 1, 1938-1970	6		136,000									
Hot Spring Valley	1	May 1, 1920	Jan. 1, 1923-1936	6	160,000		None	160,000	None	None	75,500	84,500	35,000	21,000	6,200
	2	Oct. 15, 1921	Jan. 1, 1927-1939	6	100,000										
					60,000										
Imperial	1	Jan. 1, 1915	Jan. 1, 1936-1955	5	16,000,000		None	16,000,000	None	None	1,693,000	14,307,000	107,000	800,035	884,714
	2	Jul. 1, 1917	Jul. 1, 1938-1957	5	3,500,000										
	3	Oct. 1, 1919	Jul. 1, 1925-1934	5 1/2	2,500,000										
	4	Jul. 1, 1922	Jul. 1, 1935-1956	6	7,500,000										
Jacinto	1	Dec. 1, 1920	Jan. 1, 1923-1942	6	238,000		None	238,000	None	None	81,000	157,000	25,000	16,745	None
James	1	May 15, 1920	Jan. 1, 1928-1947	6	1,000,000		None	1,000,000	None	None	5,000	995,000	345,000	366,990	60
La Canada	1	Jul. 1, 1925	Jul. 1, 1936-1960	5	328,000		None	328,000	None	None	None	328,000	None	None	None
	2	Jul. 1, 1928	Jul. 1, 1949-1968	5	154,000										
					174,000										
Lakeaside	1	Feb. 1, 1925	Jan. 1, 1946-1965	6	35,000		None	35,000	None	None	None	35,000	None	None	None
La Mesa, L. G. and S.V.	1	Jul. 1, 1914	Jun. 30, 1935-1939	6	3,732,500		1,166,500	2,066,000	500,000	None	10,000	2,056,000	None	214,989	None
	2	Jan. 1, 1925	Jan. 1, 1946-1965	6	1,232,500										
					2,500,000										
Lindsay-Strathmore	1	Jul. 1, 1916	Jul. 1, 1927-1946	6	1,650,000		None	1,650,000	None	None	222,000	1,428,000	24,500	74,512	49,995
	2	Oct. 1, 1918	Oct. 1, 1929-1948	6	1,400,000										
					250,000										
Little Rock Creek	3	Jul. 1, 1914	Jan. 1, 1934-1954	5	368,000		None	368,000	None	None	8,000	360,000	9,000	83,250	None
	4	Jan. 16, 1920	Jan. 1, 1941-1960	6	60,000										
	5	May 1, 1921	Jan. 1, 1925-1942	6	200,000										
	6	Jan. 1, 1925	Jan. 1, 1941-1960	6	48,000										
					60,000										
Maxwell	1	Sep. 15, 1918	Jan. 1, 1922-1941	6	260,000		None	260,000	None	None	28,000	2,000	(\$230,000 purchased by Landowners' Committee)		

TABLE IV (Continued)  
SUMMARY OF STATISTICAL DATA RELATING TO OUTSTANDING BONDS AND WARRANTS OF CALIFORNIA IRRIGATION DISTRICTS  
JANUARY 1, 1934  
(Totals for each district underscored)

Name of District	Number of Bond Issues	Date of Bonds	Range of Maturities	Regular Coupon Rate, per cent	Status of Bond Issues January 1, 1934								Interest Bearing Warrants Outstanding 1/1/34		
					Face Value of Bonds Voted		Disposition of Bonds Voted			Disposition of Bonds Sold				Bond Payments Due and Not Paid	
					Original	Refunding	Original Issues		Unsold, all Issues	Refunded	Paid	Out-standing		Principal	Interest
		Canceled	Sold												
Merced	1 1st Div	Jan. 1, 1922	Jan. 1, 1933-1950	6	\$16,250,000		\$ None	\$16,250,000	\$ None	\$ None	\$ 27,000	\$16,223,000	\$ 96,000	\$1,044,585	\$ None
	2 2d Div	Jan. 1, 1922	Jan. 1, 1951-1953	5 1/2	3,120,000										
	1 3d Div	Jan. 1, 1922	Jan. 1, 1954-1955	5 3/4	1,800,000										
	1 4th Div	Jan. 1, 1922	Jan. 1, 1956-1962	6	1,420,000										
	2	May 1, 1924	Jan. 1, 1937-1964	6	5,660,000										
	3	Apr. 1, 1926	Jan. 1, 1965-1966	5 1/2	3,250,000										
					1,000,000										
Modesto					<u>3,749,000</u>	<u>1,385,511</u>	<u>46,000</u>	<u>4,855,511</u>	<u>236,000</u>	<u>None</u>	<u>987,981</u>	<u>3,867,530</u>	<u>None</u>	<u>None</u>	<u>None</u>
	1 Ref.	May 1, 1902	Jan. 1, 1923-1942	5		1,056,511									
	2	Jan. 1, 1903	Jan. 1, 1914-1923	6	18,000										
	2 Ref.	Jan. 5, 1904	Jan. 1, 1925-1944	5		332,000									
	3	Jul. 1, 1909	Jul. 1, 1930-1939	5	200,000										
	4	Jan. 1, 1911	Jan. 1, 1932-1941	5	50,000										
	5-6	Jul. 1, 1914	Jul. 1, 1935-1954	6	610,000										
	7-11	Jul. 1, 1920	Jul. 1, 1931-1950	6	2,000,000										
	12	Oct. 1, 1923	Jul. 1, 1934-1953	5	135,000										
	13	Jan. 1, 1924	Jul. 1, 1944-1953	5	500,000										
	14	Jan. 1, 1927	Jan. 1, 1942-1951	5	235,000										
Montague	1	Jan. 1, 1926	Jan. 1, 1947-1966	6	<u>1,395,000</u>		<u>None</u>	<u>1,395,000</u>	<u>None</u>	<u>None</u>	<u>None</u>	<u>1,395,000</u>	<u>None</u>	<u>209,250</u>	<u>None</u>
Naglee-Burk	1	Oct. 1, 1921	Jul. 1, 1926-1940	6	<u>200,000</u>		<u>None</u>	<u>195,000</u>	<u>11,000</u>	<u>186,000</u>	<u>9,000</u>	<u>186,000</u>	<u>None</u>	<u>3,755</u>	<u>7,283</u>
	1 Ref.	Jul. 1, 1927	Jul. 1, 1933-1967	6		<u>192,000</u>									
Nevada	Original				<u>9,842,000</u>		<u>None</u>	<u>8,087,000</u>	<u>1,809,000</u>	<u>8,046,000</u>	<u>None</u>	<u>8,087,000</u>	<u>None</u>	<u>None</u>	<u>20,721</u>
	1 1st Div	Jul. 1, 1925	Jul. 1, 1936-1965	5 1/2	6,000,000										
	2 2d Div	Jul. 1, 1926	Jul. 1, 1933-1965	5 3/4	1,250,000										
	2	Jul. 1, 1928	Jul. 1, 1949-1962	5 3/4	2,592,000										
	Refunding	Sep. 15, 1931	Sinking Fund-1981	4		<u>8,100,000</u>									
Newport Heights	1	Jan. 1, 1910	Jul. 1, 1941-1960	6	<u>160,000</u>		<u>None</u>	<u>160,000</u>	<u>None</u>	<u>None</u>	<u>None</u>	<u>160,000</u>	<u>None</u>	<u>None</u>	<u>None</u>
Newport Mesa	1	Jan. 1, 1919	Jul. 1, 1940-1959	6	<u>50,000</u>		<u>None</u>	<u>50,000</u>	<u>None</u>	<u>None</u>	<u>None</u>	<u>50,000</u>	<u>None</u>	<u>None</u>	<u>None</u>
Oakdale					<u>3,675,000</u>	<u>2,320,000</u>	<u>None</u>	<u>3,675,000</u>	<u>116,000</u>	<u>2,204,000</u>	<u>340,000</u>	<u>3,335,000</u>			<u>None</u>
	1	Jul. 1, 1910	Jul. 1, 1931-1940	5	1,600,000										
	2	Jan. 1, 1913	Jan. 1, 1934-1943	5	400,000										
	3	Jul. 1, 1915	Jul. 1, 1936-1955	6	400,000										
	4	Jan. 1, 1924	Jan. 1, 1925-1931	5 1/2	175,000										
	5	Jun. 21, 1925	Jan. 1, 1927-1965	5	1,100,000										
	1 Ref.	Oct. 1, 1931													
	1st Div		Jul. 1, 1950-1972	5		200,000									
	2nd Div		Jul. 1, 1935-1966	4		960,000									
	3d Div		Sinking Fund-1978	6		200,000									
	4th Div		Sinking Fund-1978	5		960,000									
Oroville-Wyandotte	1	Jan. 1, 1923	Jan. 1, 1944-1963	6	<u>2,000,000</u>		<u>None</u>	<u>1,095,000</u>	<u>905,000</u>	<u>None</u>	<u>None</u>	<u>1,095,000</u>	<u>None</u>	<u>143,340</u>	<u>36,403</u>
Owens Valley	1	Jan. 1, 1924	Jan. 1, 1940-1959	5 1/2	<u>1,650,000</u>		<u>None</u>	<u>471,500</u>	<u>1,178,500</u>	<u>None</u>	<u>None</u>	<u>471,500</u>	No information		
Palmdale					<u>545,000</u>		<u>None</u>	<u>445,000</u>	<u>100,000</u>	<u>None</u>	<u>4,000</u>	<u>441,000</u>	<u>8,000</u>	<u>225,275</u>	<u>10,940</u>
	1	May 16, 1920	Jan. 1, 1941-1960	6	382,000										
	2	May 1, 1921	Jan. 1, 1933-1942	6	63,000										
	3	Jun. 1, 1925	Jan. 1, 1941-1960	6	100,000										

TABLE IV (Continued)  
SUMMARY OF STATISTICAL DATA RELATING TO OUTSTANDING BONDS AND WARRANTS OF CALIFORNIA IRRIGATION DISTRICTS  
JANUARY 1, 1934  
(Totals for each district underscored)

Name of District	Number of Bond Issues	Date of Bonds	Range of Maturities	Regular Coupon Rate, per cent	Status of Bond Issues January 1, 1934								Interest Bearing Warrants Outstanding 1/1/34		
					Face Value of Bonds Voted		Disposition of Bonds Voted			Disposition of Bonds Sold				Bond Payments Due and Not Paid	
					Original	Refunding	Original Issues	Unsold, all Issues	Refunded	Paid	Out-standing	Principal		Interest	
Palo Verde					\$ 6,507,330		\$ 32,000	\$ 4,913,330	\$ 1,562,000	\$ None	\$ 739,000	\$ 4,174,330	\$ 294,500	\$ 902,783	\$ None
Mutual Water Company-	1	Feb. 1, 1916	Feb. 1, 1922-1935	6	500,000										
Levee District-----	1	May 1, 1918	May 1, 1919-1958	6 1/2	1,285,951										
Levee District-----	2	Nov. 1, 1922	Nov. 1, 1923-1962	6 1/2	371,379										
Drainage District-----	1	Dec. 1, 1921	Jan. 1, 1933-1942	6	850,000										
Irrigation District--	1	Sep. 1, 1925	Jul. 1, 1937-1955	6	3,500,000										
Paradise					490,000		None	490,000	None	None	14,000	476,000	1,000	30,840	1,513
	1	May 1, 1917	May 1, 1938-1957	6	350,000										
	2	Jul. 1, 1920	Jul. 1, 1925-1956	6	140,000										
Potter Valley	1	Jul. 1, 1928	Jul. 1, 1933-1952	5 1/2	100,000		None	97,000	3,000	None	5,000	92,000	None	None	None
Princeton-Codora-Glenn	1	Jul. 1, 1918	Jul. 1, 1939-1958	6	175,000		None	175,000	None	None	10,000	165,000	None	10,243	8,996
Provident					1,190,000		None	1,190,000	None	None	192,000	998,000	102,000	168,351	None
	1	Aug. 15, 1918	Aug. 15, 1930-1949	6	1,000,000										
	2	Aug. 9, 1921	Jul. 1, 1922-1933	6	190,000										
Ramona	1	Jul. 1, 1926	Jul. 1, 1947-1966	6	91,000		None	91,000	None	None	None	91,000	None	None	1,000
Richvale	1		1937-1970	6	515,000		None	515,000	None	None	None	515,000	None	None	None
Riverdale	1	Oct. 1, 1922	Jul. 1, 1925-1933	6	123,000		None	123,000	None	None	123,000	None	None	None	None
San Dieguito	1	Apr. 1, 1923	Jan. 1, 1931-1950	6	400,000		None	400,000	None	None	34,000	366,000	13,000	21,960	None
Santa Fe	1	Nov. 1, 1923	Jul. 1, 1933-1952	6	700,000		None	700,000	None	None	None	700,000	19,000	21,000	62,641
San Ysidro	1	Jan. 1, 1913	Jan. 1, 1934-1943	5	25,000		None	25,000	None	None	None	25,000	1,250	625	19,759
Scott Valley	1	Jul. 1, 1920	Jul. 1, 1923-1937	6	125,000		None	125,000	None	69,000	60,000	65,000	None	None	None
	1 Ref.	Jan. 1, 1932	Jan. 1, 1933-1947	6		69,000									
Serrano	1	Jul. 1, 1929	Jul. 1, 1934-1953	6	200,000		None	200,000	None	None	None	200,000	None	None	None
South Montebello	1	Jun. 30, 1923	Jan. 1, 1926-1945	6	125,000		None	125,000	None	None	56,000	69,000	None	None	None
South San Joaquin					5,985,000	4,791,250	None	5,985,000	287,300	4,503,950	178,750	5,806,250	16,500	39,458	84,420
	1	Jul. 1, 1910	Jul. 1, 1931-1940	5	1,875,000										
	2	Apr. 18, 1913	Apr. 18, 1934-1942	5	1,170,000										
	3	Jul. 1, 1913	Jul. 1, 1934-1943	5	790,000										
	4	Sep. 1, 1919	Sep. 1, 1940-1959	5 1/2	500,000										
	5	Nov. 6, 1923	Jul. 1, 1944-1963	5 1/2	550,000										
	6	Jun. 21, 1925	Jan. 1, 1927-1965	5	1,100,000										
	1 Ref.	Oct. 1, 1931													
	1st Div.		Jul. 1, 1936-1981	5		3,741,250									
	2nd Div.		Jul. 1, 1936-1981	5 1/2		1,050,000									
Stinson	1	Apr. 1, 1923	Jan. 1, 1931-1950	6	360,000		None	360,000	None	None	None	360,000	36,000	39,270	30,902
Table Mountain					187,000		None	187,000	None	None	None	187,000	None	29,786	None
	1	Jul. 1, 1923	Jul. 1, 1944-1963	6	125,000										
	2	Mar. 1, 1927	Jan. 1, 1948-1967	6	62,000										



TABLE IV (Continued)  
SUMMARY OF STATISTICAL DATA RELATING TO OUTSTANDING BONDS AND WARRANTS OF CALIFORNIA IRRIGATION DISTRICTS  
JANUARY 1, 1934  
(Totals for each district underscored)

Name of District	Number of Bond Issues	Date of Bonds	Range of Maturities	Regular Coupon Rate, per cent	Status of Bond Issues January 1, 1934									Interest Bearing Warrants Outstanding 1/1/34	
					Face Value of Bonds Voted		Disposition of Bonds Voted			Disposition of Bonds Sold			Bond Payments Due and Not Paid		
					Original	Refunding	Original Canceled	Issues Sold	Unsold, all Issues	Refunded	Paid	Out-standing	Principal		Interest
Terra Bella	1 1 Ref.	Nov. 1, 1916 Jul. 1, 1933	Nov. 1, 1927-1946 Sinking Fund-1979	6 4	\$ 1,000,000	\$ 409,000	\$ 409,000	\$ 1,000,000	\$ None	\$ 409,000	\$ 182,000	\$ 409,000	\$ None	\$ None	\$ None
Thermalite	1 2	Mar. 1, 1923 May 1, 1926	Jan. 1, 1934-1953 Jan. 1, 1947-1966	6 6	320,000	270,000 50,000	None	320,000	None	None	None	320,000	5,000	29,220	11,680
Tracy-Clover	1	May 1, 1923	Jan. 1, 1939-1963	6	52,170	None	None	52,170	None	None	None	52,170	None	450	500
Tranquillity	1	Jan. 1, 1920	Jan. 1, 1924-1955	5½	260,000	None	None	260,000	None	None	11,000	247,000	10,000	54,122	16,663
Tule	1	Jul. 1, 1921	Jan. 1, 1926-1943	6	806,000	None	None	806,000	None	None	None	806,000	214,000	360,288	None
Turlock	1 Ref. 1 2 3 4-5 6 7 8	Jul. 1, 1902 Jan. 1, 1905 Jul. 1, 1910 Jan. 1, 1911 Jul. 1, 1920 Jul. 1, 1920 Jan. 1, 1924 Dec. 31, 1926	Jan. 1, 1922-1942 Jan. 1, 1926-1935 Jul. 1, 1931-1940 Jan. 1, 1932-1941 Jul. 1, 1936-1951 Jul. 1, 1941-1960 Jan. 1, 1927-1936 Jul. 1, 1932-1946	5 5 5 5 6 5½ 5 5	6,714,000	1,200,000	None	7,775,200	44,000	None	1,380,360	6,394,840	None	None	None
Vandalia	1 1 Ref.	Apr. 1, 1924 Jul. 1, 1933	Jan. 1, 1928-1947 Sinking Fund-1968	6 5	210,000	172,200	None	210,000	None	162,200	37,800	172,200	2,000	1,722	None
Vista	1	Jan. 1, 1925	Jan. 1, 1946-1965	6	1,700,000	None	None	1,700,000	None	None	None	1,700,000	None	34,000	None
Waterford	1 2	Oct. 1, 1916 Jul. 1, 1919	Oct. 1, 1927-1946 Jul. 1, 1927-1946	6 5½	670,000	465,000 205,000	None	670,000	None	None	35,075	634,925	60,775	71,166	1,111
West Side	1 2 3 4	Jan. 1, 1917 Jul. 1, 1918 Jan. 1, 1920 Feb. 1, 1929	Jan. 1, 1938-1957 Jul. 1, 1939-1958 Jan. 1, 1930-1939 Jan. 1, 1950-1969	6 6 6 6	595,000	295,000 100,000 150,000 50,000	None	595,500	36,500	None	47,000	511,500	28,000	37,275	56,332
West Stanislaus	1 1 Ref.	Jul. 1, 1927 Jul. 1, 1933	Jul. 1, 1932-1957 Jul. 1, 1936-1983	6 5½	1,216,376	1,160,000	41,376	1,175,000	None	1,082,000	15,000	1,160,000	None	18,630	33,364
Williams	1 2 1st Div. Ref. 2 2d Div. 3	Jul. 1, 1921 Jan. 1, 1924 Jan. 1, 1924 Jun. 1, 1924	Jan. 1, 1923-1937 Jan. 1, 1942-1959 Jan. 1, 1959-1961 Jan. 1, 1945-1961	6 6 6 6	732,000	600,000	None	585,000	234,000	379,000	20,000	565,000	40,000	213,210	41,997
Woodbridge	1	Mar. 1, 1928	Jan. 1, 1930-1954	5½	325,000	None	None	325,000	None	None	35,000	290,000	None	None	None
Totals					108,302,376	26,566,211	2,056,726	102,878,421	8,145,240	18,337,150	8,904,209	93,461,212	2,065,542	6,342,139	1,554,966
Buena Vista W. S. D.	1	Jul. 1, 1929	Jul. 1, 1935-1968	6	942,731	None	None	942,731	None	None	None	942,731	None	None	78,118

Summary contains data on Baxter Creek, Maxwell, Mojave River, Owens Valley, Red Rock Creek, Tule and Williams irrigation districts which are considered as inactive or partially active.

TABLE V

YEAR FORMED, AREA AND BONDS OUTSTANDING IN CALIFORNIA IRRIGATION DISTRICTS  
January 1, 1934

Irrigation District	Year Formed	Estimated Area		Bonds Outstanding Total	Bonds Outstanding Per Acre	
		Gross Acres	Irrigable Acres		Gross Area	Irrigable Area
Alpaugh -----	1915	8,133	8,132	\$ 207,740	\$ 25.57	\$ 25.57
Alta -----	1888	129,300	110,000	157,500	1.22	1.43
Anderson-Cottonwood -----	1914	32,000	28,064	1,141,000	35.66	40.66
Banta-Carbena -----	1921	15,653	15,194	1,137,060	72.64	74.64
Bard -----	1927	5,904	5,857	None	None	None
Barter Creek -----	1917	9,336	8,636	511,000	54.53	59.17
Beaumont -----	1919	4,141	3,161	217,100	52.43	68.68
Big Springs -----	1927	3,615	2,550	59,000	16.32	23.13
Big Valley -----	1925	12,430	12,000	None	None	None
Browns Valley -----	1888	40,000	11,740	None	None	None
Butte Valley -----	1920	29,400	17,500	594,000	20.00	33.94
Byron-Bethany -----	1919	17,200	12,544	569,000	33.08	45.32
Camp Far West -----	1924	4,086	2,658	179,000	43.78	67.34
Carmichael -----	1916	3,138	3,038	84,100	26.46	27.35
Carpenter -----	1927	1,328	1,320	200,000	150.60	151.52
Citrus Heights -----	1920	3,167	3,079	154,000	48.62	50.00
Compton-Delevan -----	1920	12,652	11,500	384,000	30.35	33.39
Consolidated -----	1921	149,047	145,757	None	None	None
Corcoran -----	1919	51,606	51,000	733,000	14.19	14.40
Cordua -----	1919	5,944	5,304	256,817	43.20	48.42
Deer Creek -----	1926	2,186	2,000	15,000	6.81	7.50
East Contra Costa -----	1926	20,200	19,760	1,153,000	57.00	58.50
El Camino -----	1921	7,546	7,546	423,000	56.03	56.03
El Dorado -----	1925	30,000	19,905	688,000	22.93	34.56
El Nido -----	1929	9,330	7,405	120,000	12.86	16.10
Empire West Side -----	1931	7,010	6,400	None	None	None
Fair Oaks -----	1917	3,900	3,400	88,000	22.00	25.86
Fallbrook -----	1925	9,015	9,000	None	None	None
Fresno -----	1920	241,300	239,080	None	None	None
Glenn-Colusa -----	1920	122,431	119,421	1,395,150	11.42	11.85
Grenada -----	1921	2,163	1,800	136,000	63.30	68.00
Hot Spring Valley -----	1919	9,533	9,000	84,500	8.86	9.40
Imperial -----	1911	612,200	521,600	14,307,000	23.30	27.80
Island No. 3 -----	1921	4,620	4,120	None	None	None
Jacinto -----	1917	11,664	11,496	157,000	13.46	13.66
James -----	1920	26,642	18,266	995,000	37.35	54.47
La Canada -----	1924	1,296	1,239	323,000	253.48	264.73
Laguna -----	1920	34,858	30,000	None	None	None
Lakeside -----	1924	320	288	35,000	109.38	121.53
Lakeland -----	1923	23,283	23,000	None	None	None
La Mesa, L. G. and S. V. -	1913	19,245	13,550	2,056,000	106.83	151.73
Linden -----	1929	13,700	13,500	None	None	None
Lindsay-Strathmore -----	1915	15,246	14,540	1,428,000	93.66	98.21
Littlerock Creek -----	1892	3,073	2,877	360,000	117.50	125.13
Lucerne -----	1925	33,407	33,000	None	None	None
Madera -----	1920	173,000	170,000	None	None	None

TABLE V

YEAR FORMED, AREA, AND IRRIGATION BONDS OUTSTANDING IN CALIFORNIA DISTRICTS (Continued)  
January 1, 1933

Irrigation District	Year Formed	Estimated Area		Bonds Outstanding Total	Bonds Outstanding Per Acre	
		Gross Acres	Irrigable Acres		Gross Area	Irrigable Area
Merced -----	1919	190,000	170,000	\$16,223,000	\$ 85.33	\$ 95.42
Modesto -----	1887	81,203	76,360	3,867,530	47.61	50.65
Mojave River -----	1917	27,665	27,000	None	None	None
Montague -----	1925	26,117	18,531	1,395,000	53.41	75.28
Naglee-Burk -----	1920	2,871	2,846	186,000	64.79	65.35
Nevada -----	1921	266,000	164,000	8,087,000	30.36	49.25
Newport Heights -----	1918	1,503	1,503	160,000	106.45	106.45
Newport Mesa -----	1918	694	400	50,000	72.05	125.00
Oakdale -----	1909	74,300	64,000	3,335,000	44.88	52.10
Oroville-Wyandotte -----	1919	24,100	22,300	1,095,000	45.22	52.34
Owens Valley -----	1922	53,990	None	471,500	None	None
Palmdale -----	1918	4,756	4,698	441,000	92.73	93.92
Palo Verde -----	1923	88,693	70,000	4,174,330	47.06	59.60
Paradise -----	1916	11,260	9,836	476,000	42.27	48.39
Potter Valley -----	1924	5,042	4,195	92,000	18.14	21.93
Princeton-Codora-Glenn ---	1916	13,332	12,290	165,000	12.37	13.42
Provident -----	1918	22,805	21,000	998,000	43.76	47.52
Ramona -----	1925	660	594	91,000	137.68	153.20
Richvale -----	1930	17,170	14,800	515,000	29.99	35.27
Riverdale -----	1920	15,830	14,800	None	None	None
San Dieguito -----	1922	4,000	3,700	366,000	91.50	99.00
Santa Fe -----	1923	10,106	6,980	700,000	69.27	100.00
San Ysidro -----	1911	532	490	25,000	50.00	51.02
Scott Valley -----	1917	5,103	4,000	65,000	12.60	16.25
Serrano -----	1927	1,498	1,319	200,000	133.42	151.63
South Fork -----	1934	12,946	12,000	None	None	None
South Montebello -----	1922	827	827	69,000	83.44	83.44
South San Joaquin -----	1909	71,112	66,465	5,806,250	83.05	87.36
Stinson -----	1921	11,150	11,000	360,000	32.29	32.73
Stratford -----	1916	12,946	12,000	None	None	None
Table Mountain -----	1922	1,955	1,780	187,000	95.65	105.06
Terra Bella -----	1915	12,000	12,000	409,000	34.00	34.05
Thermalito -----	1922	3,100	2,940	320,000	102.89	108.64
Tracy-Clover -----	1922	1,084	1,034	52,170	48.13	49.49
Tranquillity -----	1918	10,750	10,190	247,000	22.98	24.24
Tulare -----	1889	34,000	30,600	None	None	None
Tule -----	1920	15,015	9,795	806,000	53.68	82.29
Turlock -----	1887	181,556	179,278	6,394,840	35.30	35.67
Vandalia -----	1923	1,275	1,253	172,200	135.00	137.43
Vista -----	1923	18,338	14,654	1,700,000	92.70	116.01
Walnut -----	1893	911	900	None	None	None
Waterford -----	1913	14,110	11,424	634,925	55.14	55.75
West Side -----	1915	11,820	11,800	511,500	43.27	43.34
West Stanislaus -----	1920	21,830	21,500	1,160,000	53.14	53.95
Williams -----	1920	9,009	8,000	565,000	62.72	70.63
Woodbridge -----	1924	14,167	14,000	290,000	20.46	20.71
Totals -----		3,384,079	2,910,379	93,461,212		
Buena Vista W.S.D. -----	1928	78,596	50,400	942,731	11.99	18.70



